

BJB///OEM-Line

The modular system for
LED luminaire production



Reflector

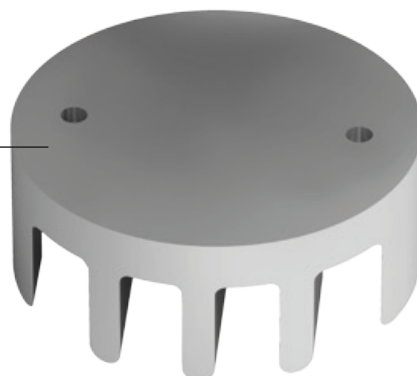


Lamp

BJB///
Light Engine



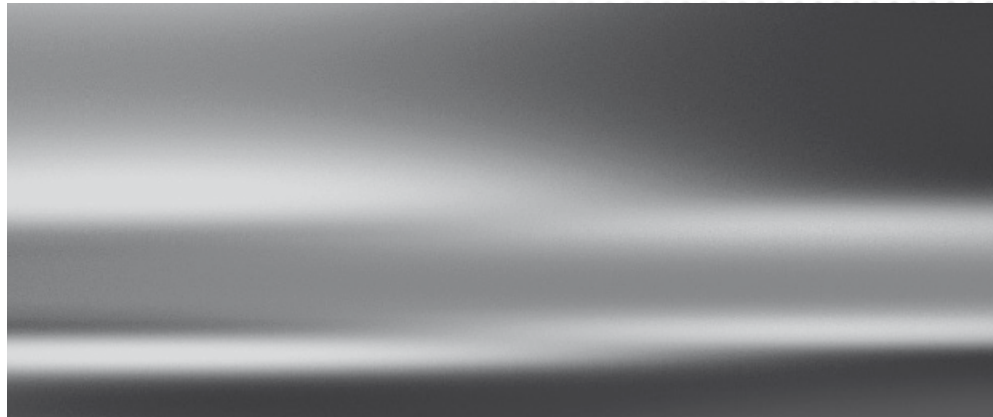
Lampholder



Heat sink

LED Spot-/Downlight system from BJB.

If you want to make an impression.



The compact module comprises a socketed and encapsulated LED lamp, together with a suitable lampholder incorporating a twist & lock fixing. The lampholder gets easily assembled with two standard screws. With the support of two preloaded leaf springs, a defined contact pressure of the light source to the heat sink ensures a reliable heat dissipation.

Fully automated wiring processes are just as possible as the pre-assembly of your light fitting without the relevant light source. Those "platforms" can be produced in a very rational

manner and then later be equipped with the preferred light source (Late Stage Finishing). This option eliminates costly small batch sizes and equally minimizes storage risks.

To enhance your production processes even further, the LED lamp incorporates a reflector interface. Whilst this is suitable for standard reflectors available, it also allows for your own designs being used.

Available with divergent light outputs and colour temperatures, the new BJB LED module replaces conventional CFL or MR16 lamps within spotlight and downlight applications. For new fittings, this system offers a smart entry into low maintenance, flexible LED solutions for shops, offices and hospitality areas.

Can be used in Spot- and Downlight applications

