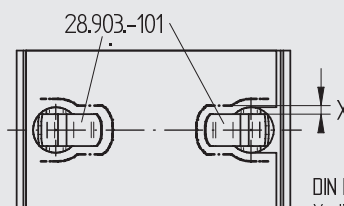
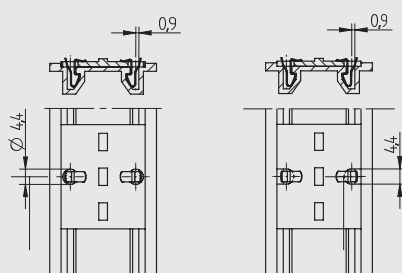
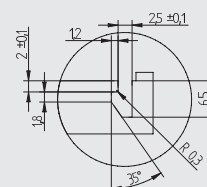
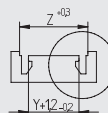
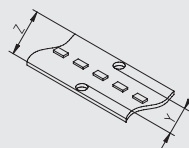
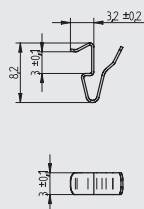


Additional information for P2F - Push to fix- 28.903.-101
Fixing elements for PCBs in screw- or profile grooves



28.903.-101.10



DIN EN 60598-1
X: distance to current carrying layout
 <60V (SELV): X ≥ 1,24mm
 <120V: X ≥ 1,48mm
 <250V: X ≥ 2,5mm
 for basic insulation