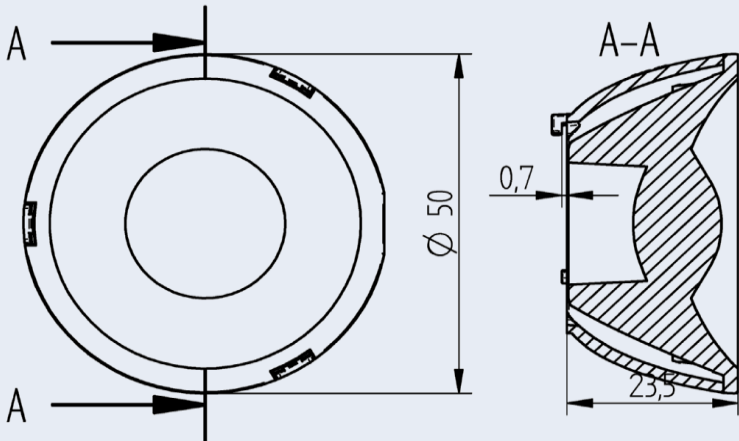


OptiSpot Lens Ø 50 mm - Medium

35.250 - Optispot Lens for use with COB connectors 47.360 Ø 35 mm



Part no.

35.250.2002-0

OptiSpot Lens Ø 50 mm - Medium

Bayonet fixing by Twist & Lock action

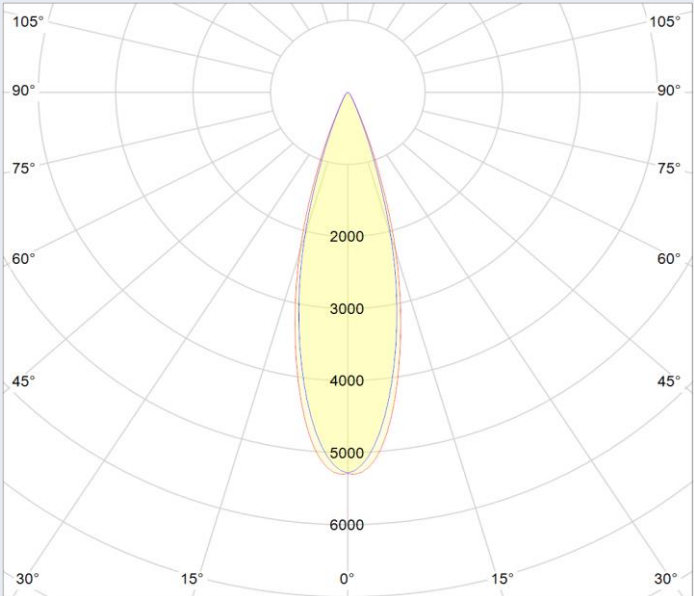
Light distribution: Medium

OptiSpot Lens is optimized for use with connectors **47.360** with Ø 35 mm.*

Specification	
Top diameter	50 mm
Height	23,50 mm
Material holder	PC
Material lens	PMMA
Operating temperature	- 40°C ... 80°C*
Weights	30,8 g
Light distribution	Medium
Beam angle* (FWHM)	27°
Efficiency**	88,4%
Recommended COB Type	Citizen CLU02J

**Light distributions change with choice of LED type,
measured with COB Citizen CLU02J and BJB connector 47.360.1020-0

* 70°C, if ball pressure test according to EN 60598-1 section 13.2.1 is required for components that ensure protection against electric shock



Beam angle (FWHM) measured with Citizen CLU02J
and connector **47.360.1020-0**

Beam angle (FWHM): 27° Efficiency: 88,4 %

Light distribution and beam angle depend on the COB
used and its LES.