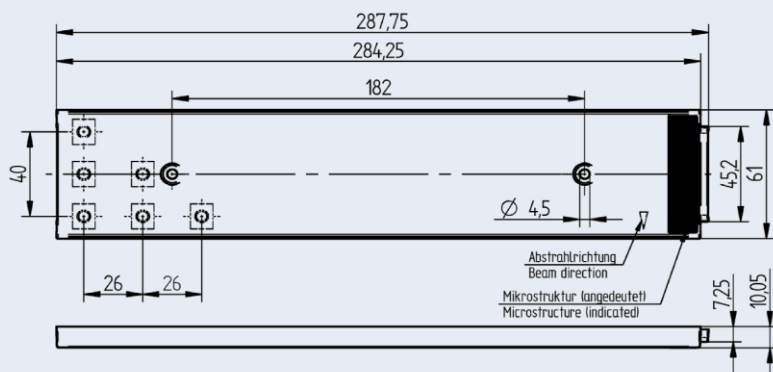


OptiLine 3x11 Low Glare - SA

35.333 OptiLine Low Glare - SA



Part no.
35.333.1015-0

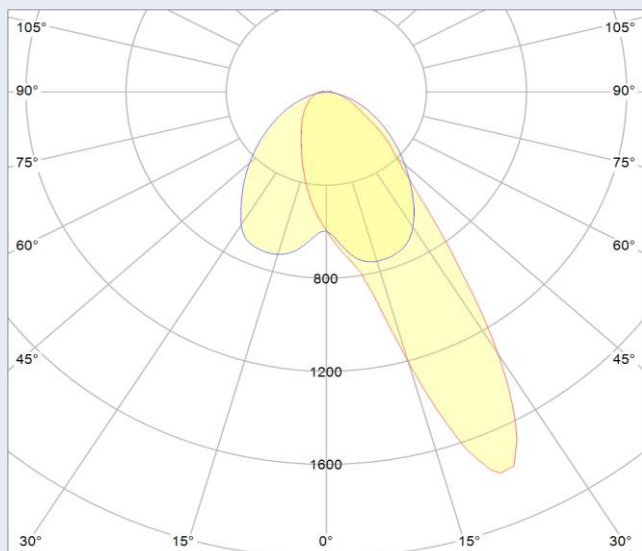
OptiLine 3x11 Low Glare - SA

- Uniform light distribution thanks to an optimized surface microstructure that reduces glare
- Designed for 3x11 LED modules according to Zhaga Book 7
- Compatible with 280 mm (1 ft) and 560 mm (2 ft) LED modules
- Groove-and-spring system enables seamless and precise optic assembly
- Mounting options:
 - With BJB P2F fixing element (Art. 28.905)
 - Or with M4 screws (1.2 Nm)
- One end cap fits both sides for efficient installation

| Specification | |
|-----------------------|--------------------------------|
| Height | 10.05 mm |
| Width | 61 mm |
| Length | 284.25 mm |
| Type of fixing | Screw (M4 1,2N) / P2F (28.905) |
| For LED dimensions | 2835, 3030 |
| Material | PC |
| Colour | clear |
| Operating temperature | max. 110 °C |
| IP protection class | IP40 |
| Weight | 85.2 g |
| Pkg. | 138 |

This product contains the following REACH SVHC substances.
For further information please refer to www.bjb.com.

| CAS-Number | EG-Number | Substance name |
|------------|-----------|---|
| 3147-75-9 | 221-573-5 | 2-(2H-benzotriazol-2-yl)-4-(1,1,3,3-tetramethylbutyl)phenol |

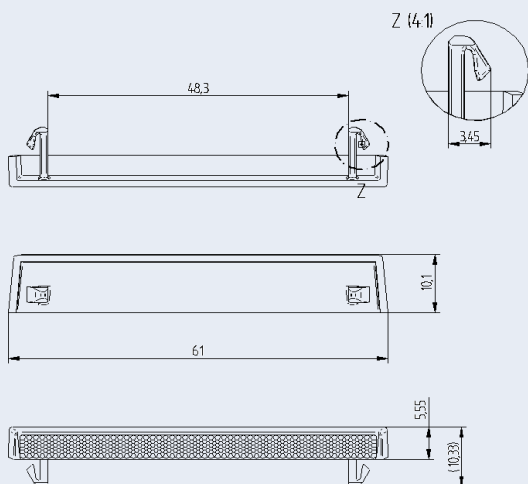


| Photometric data | |
|------------------------|----------------|
| Measured with LED Type | Samsung LM301B |
| Efficiency* | 93% |

* Measurements based on comparative integration sphere measurements ; Values & light distribution might change with serial production and other LED Types

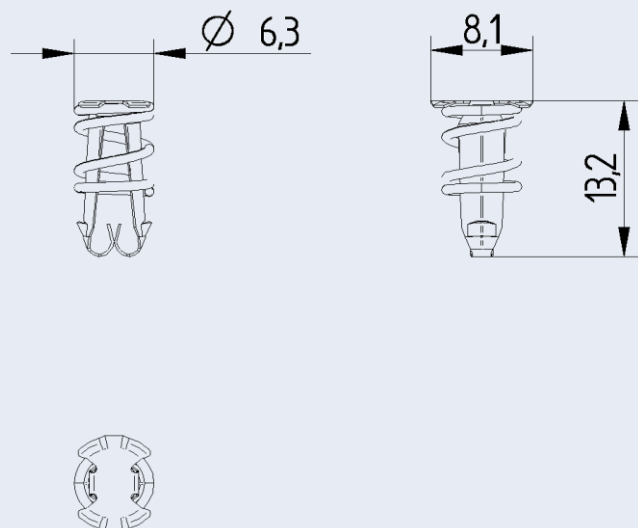
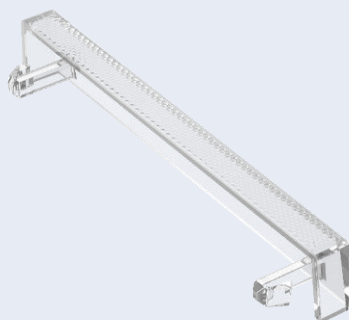
OptiLine 3x11 Low Glare - SA

3x11 Optics - End cap, P2F Fixing element for optics



End Cap 35.903.1007-0

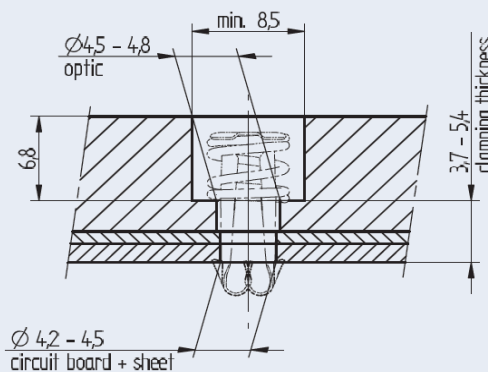
- Universal fit – one end cap suitable for both ends
- Tool-free installation – clips easily into the optic
- Ensures a clean and seamless finish of the luminaire



P2F (Push-to-Fix) Fixing Element for Optics

With the P2F accessory, both the circuit board and the optics can be mounted quickly, easily, and securely — in just one step.

- One-step assembly of optics and LED module
- Simple, fast, and secure installation by pressing down the P2F fixing element
- Reliable thermal contact thanks to constant contact pressure of 10 N per P2F
- Suitable for total assembly thicknesses from 3.7 mm to 5.4 mm



3x11 optics with pre-mounted P2F fixing element (28.905.U101-0) available for direct mounting.

