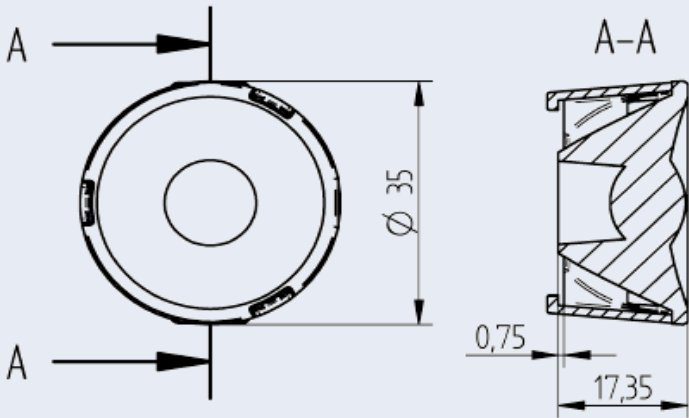


OptiSpot Lens Ø 35 mm - Spot

35.235 - Optispot Lens for use with COB connectors 47.360 Ø 35 mmm



Part no.
35.235.2001-0
OptiSpot Lens Ø 35 mm - Spot

Bayonet fixing by Twist & Lock action

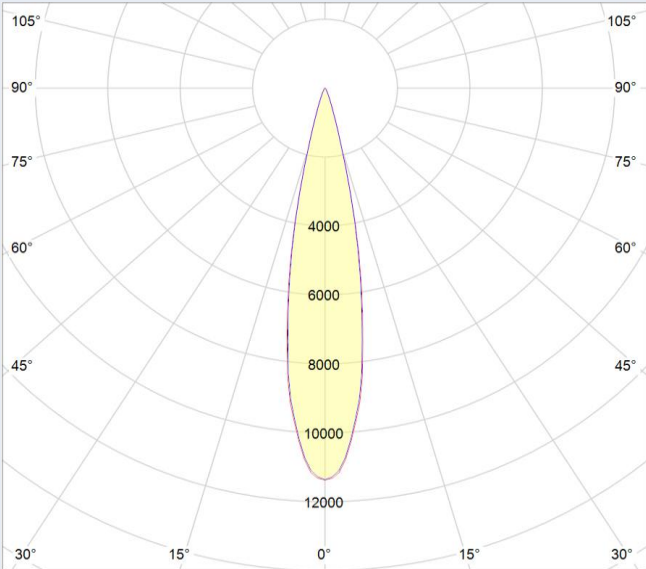
Light distribution: Spot

OptiSpot Lens is optimized for use with connectors
47.360 with Ø 35 mm.*

Specification	
Ø on top	35 mm
Height	17,35 mm
Material holder	PC
Material lens	PMMA
Operating temperature	- 40°C ... 80°C*
Weights	9,6 g
Light distribution	Spot
Beam angle* (FWHM)	20°
Efficiency**	83%
Recommended COB Type	Luminus CHM-6

**Light distributions change with choice of LED type,
measured with COB Luminus CHM-6 and BJB connector 47.360.1020-0.

* 70°C, if ball pressure test according to EN 60598-1 section 13.2.1 is required for components that ensure protection against electric shock



Beam angle (FWHM) measured with Luminus
CHM-6 and connector **47.360.1020-0**

Beam angle (FWHM): 20° Efficiency: 83%

Beam angle depends on used COB and its LES.