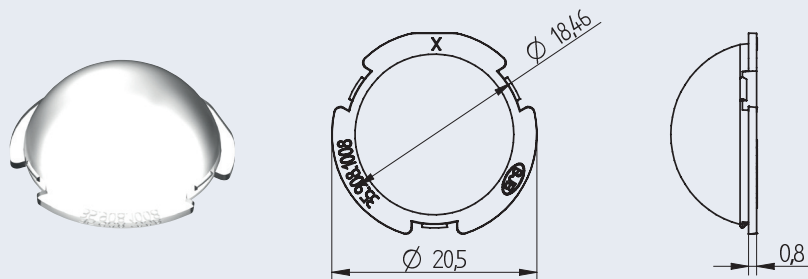


# OptiSpot R Lens Ø 20.5 mm

35.908 · Diffusor lens for reflectors **35.835** with Ø 50 mm



pkg.	wt.	part no
72	0.66 g	<b>35.908.1008.85</b>

### OptiSpot R Lens -Diffusor lens

For use with reflectors **35.835.1001 - 1004.56** mit Ø 50 mm

Snap-in fixing onto bottom side of the reflector

Material: clear PC, satined surface

The following product properties are achieved by combining a cover plate with a diffusor lens:

- Soft transition of the color fringes
- Possibly visually disruptive openings of the connector are covered
- Visible reflector design

Additional properties:

- Dust proof
- Insect protection
- Contact protection (COB)

Please do not touch the reflector inside with bare fingers.

80°C CAD

### Reflector series 35.835



**35.835.1001.56** Spot



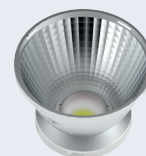
**35.835.1002.56** Medium



**35.835.1003.56** Flood



**35.835.1004.56** Wide Flood



**35.835.**  
with diffusor lens

Effect on the beam angle and the efficiency of the reflector when combined with a diffusor lens. (measured with COB Citizen CLU02J and connector **47.360.1020.50**). The values are for reference only.

Beam angle (FWHM) reflector	Efficiency reflektor	Beam angle (FWHM) with diffusor lens <b>35.908.1008.89</b>	Efficiency with diffusor lens <b>35.908.1008.89</b>
<b>35.835.1001.56</b> 15°	86%	22°	83%
<b>35.835.1002.56</b> 25°		30°	
<b>35.835.1003.56</b> 39°		44°	
<b>35.835.1004.56</b> 61°		62°	