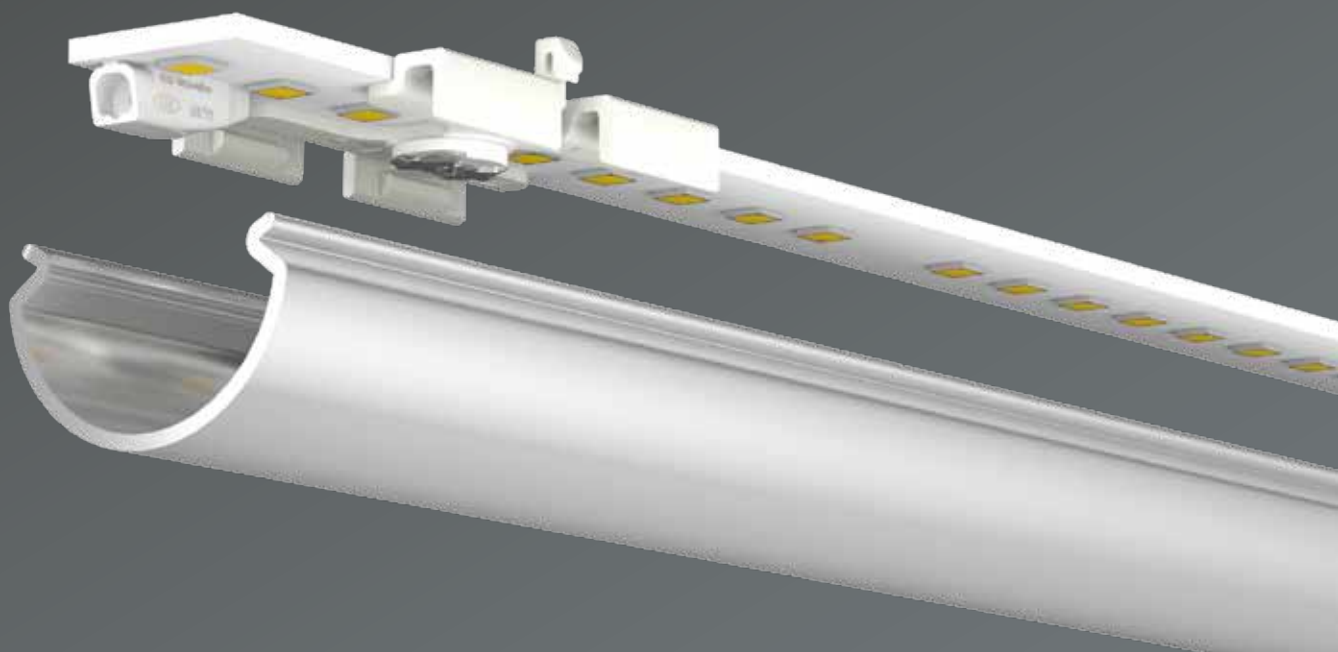




14 mm OEM-Line modular system

Product information



BJB///OEM-Line

The smartest route to your LED application



Technology for Light



From T5 to LED. With the 14 mm OEM-Line modular system

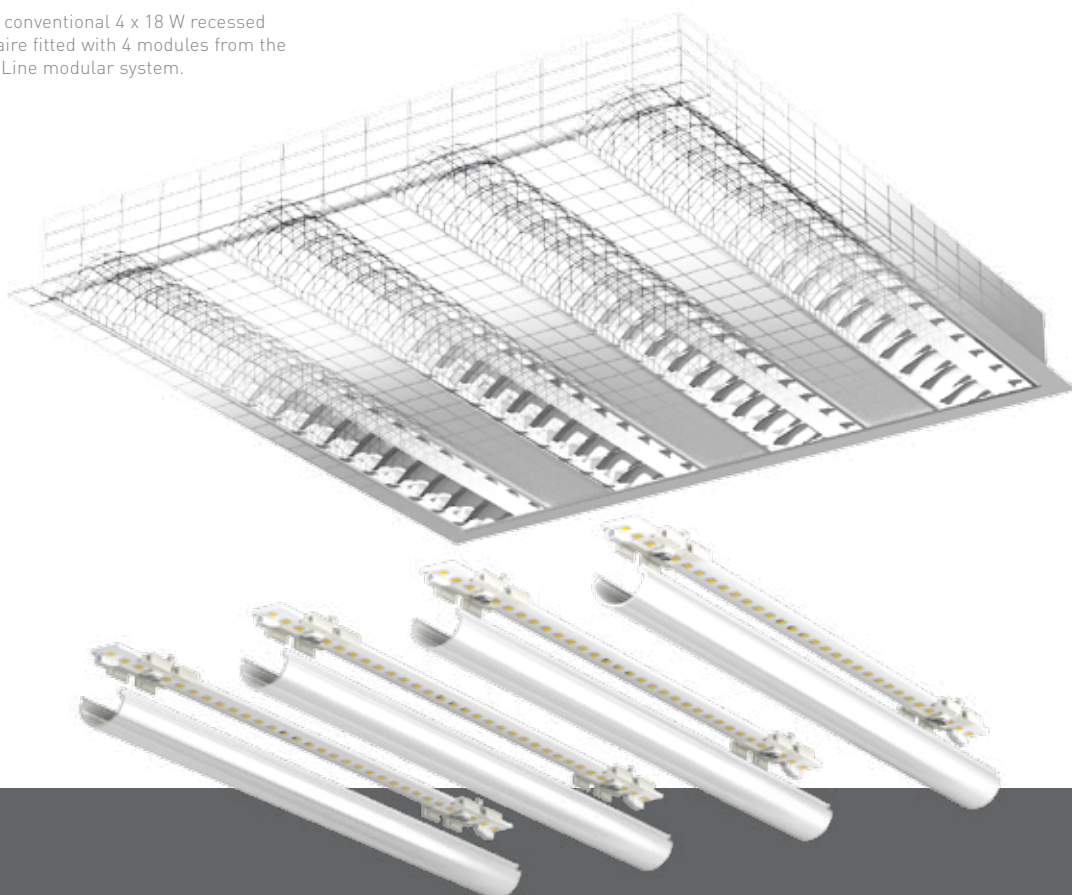
With the 14 mm OEM-Line modular system, linear or panel luminaires originally operated with T5 fluorescent lamps can be converted to modern LED applications with just a few modifications.

The 14 mm OEM-Line module shown here consists of a customer-specific PCB, optic holders, P2F (Push-to-Fix)

fixing elements and a PMMA diffusor. The system delivers a luminous flux comparable to that of a T5 fluorescent lamp solution.

The 14 mm OEM-Line modular system is especially suitable for luminaires with specular louvres, which were originally fitted with 3 or 4 lamps.

Example of a conventional 4 x 18 W recessed louvre luminaire fitted with 4 modules from the 14 mm OEM-Line modular system.

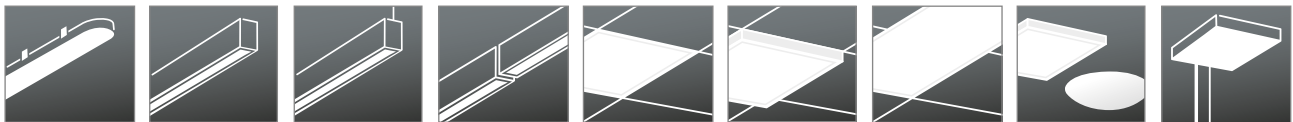


The 14 mm OEM-Line modular system in practice

The 14 mm OEM-Line modular system is suitable for operation in linear and panel luminaires. It can be used in numerous types of luminaire in the shop, supermarket,

office and hospitality fields.

Below are some examples of possible designs.



A system solution which makes LED use easier

Benefits and advantages

- Modular system offers a fully integrated approach: Optical components are combined with specific mountings
- One system supplier for all components
- Avoidance of stray light through individual layout of the PCB and positioning of the Push-to-Fix (P2F) for the optical profile holder
- Individual layout of the PCB and positioning of the LEDs to suit the existing specular louvre
- Diffusor can be mounted via a shadow-free optical profile holder and P2F fixing element
- Easy snap-in or push-in mounting

Overview

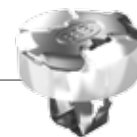
1

Diffusor
31.930.-431



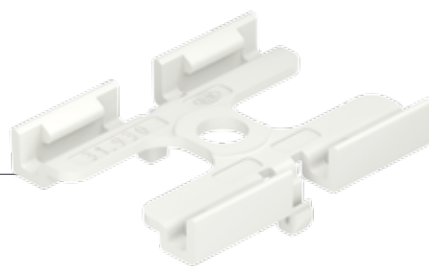
2

Push-to-Fix fixing element
28.901.UXX



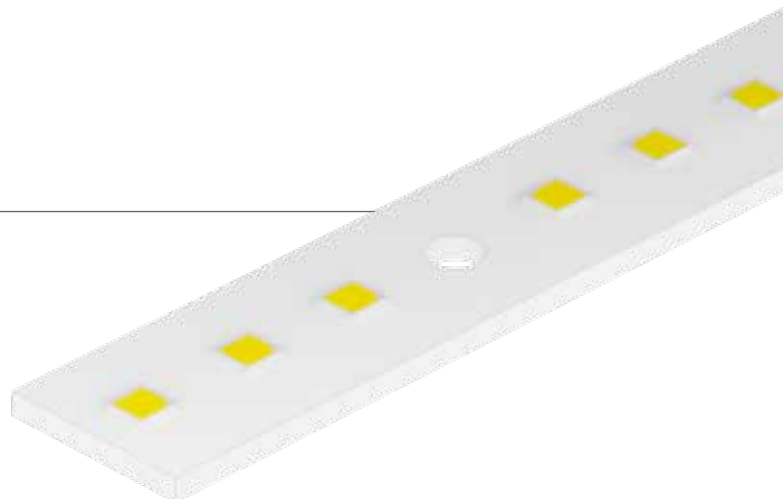
3

Optical profile holder
31.930.-321



4

Customised 14 mm PCB
30.000.XXX





Diffusor

1

The diffusor is made of PMMA with a transmission factor of approx. 92 %. This is a special material designed for LED light which offers as uniform a light distribution as possible, even on the surface. As a result, the system is comparable to a T5 fluorescent lamp.

Length: 565 mm

Diameter: 24 mm

Transmission: 92 %

Material: PMMA

Surface: Smooth

31.930.-431



Push-to-Fix fixing element

2

Both the optical profile holder and the PCB are fixed to the luminaire housing by means of a standard Push-to-Fix (P2F) fixing element.

Material: CrNi with silicone ring

Snap-in fixing:

For fixing holes with $\varnothing 4.2 \pm 0.1$ mm in the mounting plate and $\varnothing 4.7 \pm 0.1$ mm in the circuit board

Manual or automated assembly

28.901.UXX



Optical holder³

The optical profile holder serves to attach the diffuser without any additional screw fixing. It can also be used directly with the P2F to fix the PCB to the luminaire housing. The design has been carefully chosen to avoid shadow formation in the light-emission area of the LED.

Dimensions: L 30 mm, W 23,2 mm

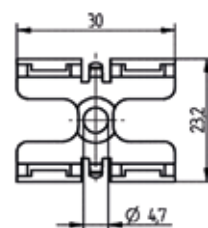
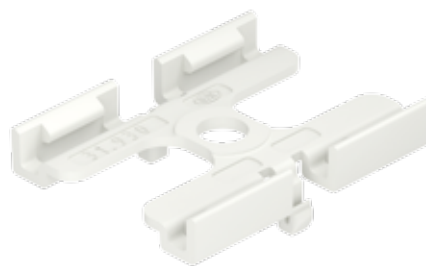
Hole diameter: 4,7 mm

Material: PC

Snap-in fixing:

For fixing holes with $\varnothing 3.2 \pm 0.1$ mm

31.930.-321



14 mm⁴ customised PCB

Example:

60V SELV LED module

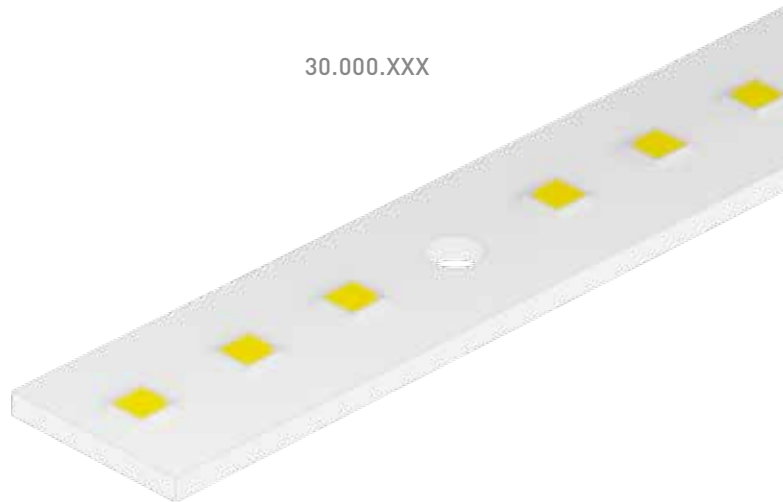
Suitable for series connection, so that, in case of a 4-lamp version, all PCBs can be operated with one ECG.

Dimensions: L 565 mm, W 14 mm

Minimum performance:

700 mA with 1200 lm at 3000 K

30.000.XXX



Example of a 14 mm customer-specific PCB



BJB worldwide

BJB Germany

BJB GmbH & Co. KG
Werler Straße 1 . 59755 Arnsberg
Telefon +49 (0) 29 32.9 82-0
Telefax +49 (0) 29 32.9 82-8201
info@bjb.com . www.bjb.com

BJB China

BJB Electric Dongguan Ltd.
Guancheng High-Tech Park Five Road (North),
Eastern Industrial Zone,
JiangNanDaDao, Qishi Town,
Dongguan
China PC: 523512
Telefon +86 769 22766 891
Telefax +86 769 22766 896
bjbchina@bjb.com . www.bjb.com

BJB UK

BJB (UK) Ltd.
5 Axis Centre
Cleeve Road
Leatherhead
KT22 7RD
Telefon +44 1372 380 850
Telefax +44 1372 380 859
bjbuk@bjb.com . www.bjb.com

BJB Hong Kong

BJB Hong Kong Ltd.
Suite 2508, Tower 1, Lippo Centre
89 Queensway
Hong Kong
Telefon +86 769 22766 891
Telefax +86 769 22766 896
bjbchina@bjb.com . www.bjb.com

BJB Italy

BJB S.p.A.
Viale Famagosta, 61
I-20142 Milano
Telefon +39 02 /89 15 02 76
Telefax +39 02 /89 15 90 29
bjbitalia@bjb.com . www.bjb.com

BJB Japan

BJB Co.,Ltd.
2-5-9 Nakagawa-chuo
Tsuzuki-ku
Yokohama 224-0003
Japan
Telefon +81 45 595 1239
Telefax +81 45 591 1001
sales-japan@bjb.com . www.bjb.com

BJB Spain

BJB Procesa S.A.
C-155 De Sabadell a Granollers, km 14,2
Apartado de Correos, 8
E-08185 Lliça de Vall (Barcelona)
Telefon +34 93/8445170
Telefax +34 93/8445184
procesa@bjb.com . www.bjb.com

BJB Taiwan

BJB Electric Taiwan Corporation
4/F, No.108, Chow-Tze Street
Nei-Hu District [114]
Taipei, Taiwan
Telefon +886 2 2627 7722
Telefax +886 2 2627 1122
sales-taiwan@bjb.com . www.bjb.com

BJB USA

BJB Electric L.P.
6375 Alabama Highway
Ringgold, GA 30736
USA
Telefon (706) 965-2526
Telefax (706) 965-2528
sales@bjb.com . www.bjb.com

Sales office Brazil

Mr. Alexandre Lozano
Av. Miro Vetorazzo, 115 C. 80
09820-135 São B. do Campo - SP - Brasil
Telefon +55 1143961582
Mobile +55 11983475204
Telefax +49 2932 982 8384
alexandre.lozano@bjb.com . www.bjb.com

ABOUT BJB

BJB was founded in 1867 by Friedrich Wilhelm Brökelmann, Franz Jäger and Gustav Busse. What began as a factory for petroleum lamps developed into a market leader for components connecting the power supply to the light source. Today, BJB is a lighting technology brand with 700 employees and subsidiaries on three continents. It supplies innovative technical components, optics and automated solutions to the lighting and domestic appliance industries worldwide.

BJB GmbH & Co. KG

Werler Str. 1 . 59755 Arnsberg . Germany
Telephone +49 29 32 9 82-0 . Telefax +49 29 32 9 82-8201
info@bjb.com . www.bjb.com



Technology for Light