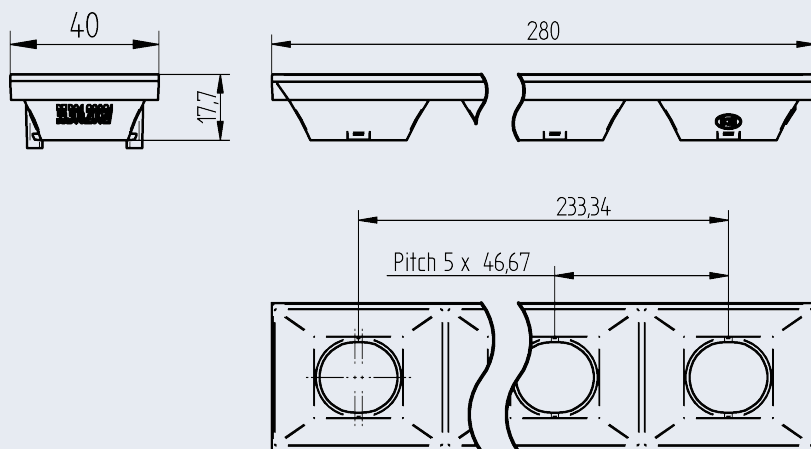


OptiLine Louvre closed frame Black / White

35.306 · Louvre 1 ft



wt.	pkg.	part no
32.5 g	72	35.306.2002-1 black
32.5 g	72	35.306.2002-0 white

Louvre 1ft

For use with 1R louvre optics

35.106.1001-0 Medium

35.106.1002-0 Wide

35.106.1003-0 Extra wide

35.106.1004-0 Single asymmetric

35.106.1005-0 Double asymmetric

Optics and louvre are only available separately

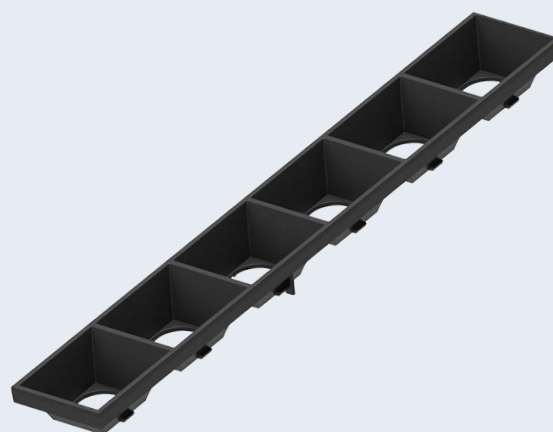
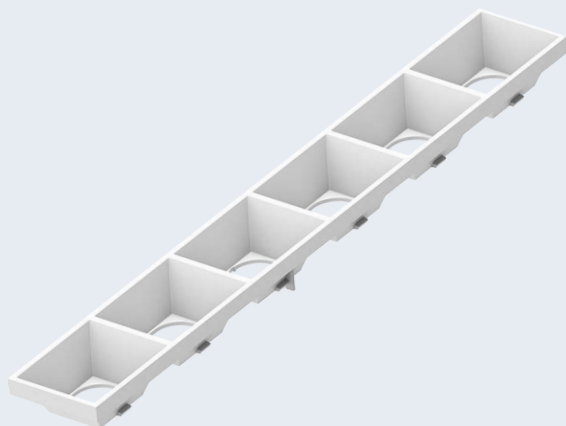
Snap-on fixing

Material: PC

Technical details

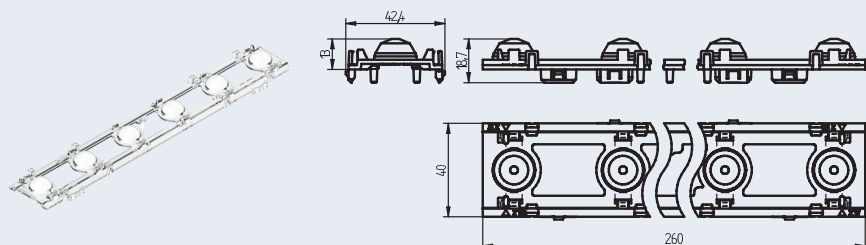
- Centering and positioning pins for aligning the louvre
- Snap-in hooks for fixing louvre into the optics
- Overlap at the louvre end
 - compensates thermal expansion
 - avoidance of stray light
- Seamless integration into the luminaire housing

Height	17.7 mm
Width	40.0 mm
Length	280.0 mm
Type of fixing	Snap into the optics
Pitch distance	46.67 mm
Material	PC
Colour	black or white
Operating temperature	max. 110 °C



OptiLine Louvre Medium

35.306 · Pitch dependent louvre optics



pkg. wt. part no.
96 27.6 g 35.306.1001-0

1-Click Louvre optics

1R linear single lens optics

35.306 (1ft) optics are designed for use with
35.306.2001 (louvre 1 ft)
35.306.2002 (louvre 1 ft)

35.312.2001 (louvre 2ft).
35.312.2002 (louvre 2 ft)

Optics and louvre are only available separately.

1-Click push-in fixing into metal sheet or aluminium profile

For metal sheets: 0.5 - 1.0 mm

Material: PC

Light distribution: Medium

- **Homogeneous color mixing (also with tunable white applications)**

Technical details

- Push-in fixing into metal sheet or aluminium profile
- Centering pins for optimal alignment of optics and LED module
- Snap-in hooks for fixing LED module and optics in one step
- Integrated cable holders for wire management
- 2 cables per cable holder possible
- Centering pins for alignment and snap-in hooks for fixing the louvre
(See page 3 and 4 for more information on the louvre)

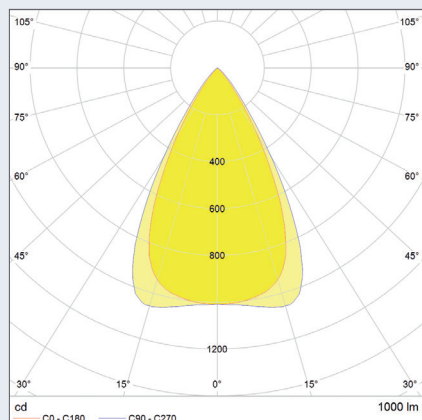
Area of application:

Applications that require optimal light and minimal glare

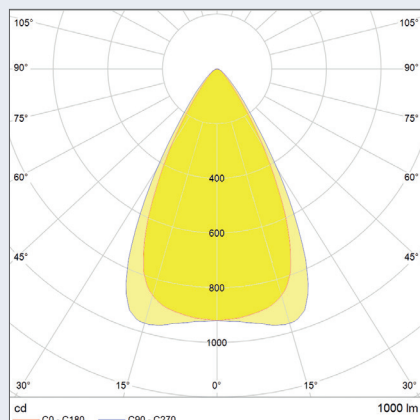
Height	13 mm
Width	40 mm
Length	260 mm
Type of fixing	Push-in fixing into metal sheet or aluminium profile
LED module	Philips Fortimo LED-R
Pitch distance	46.67 mm
Material	PC
Colour	clear
Surface outside	Single lens optics
Lichtverteilung	Medium
Optical efficiency (louvre black)	74 %
Optical efficiency (louvre white)	87 %
UGR @ 1000 lm, 1 foot (crosswise)	≤ 16 (louvre black)
UGR @ 1000 lm, 1 foot (crosswise)	≤ 16 (louvre white)
Operating temperature	max. 110 °C

The presented information are for reference only. All lighting parameters are typical values.
The light distribution depends on the used Type of LED, position tolerance, chip size and used colour.

Light distribution: black louvre



Light distribution: white louvre



Louvre: black

Light distribution: Medium 55°
Efficiency: 74%

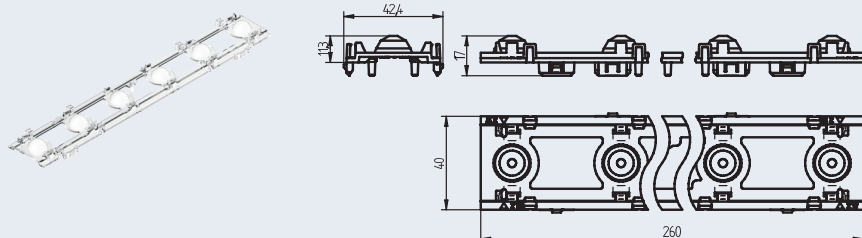
Louvre: white

Light distribution: Medium 55°
Efficiency: 87%

measured with:
Philips Fortimo LED-R FT 1ft MF 927-965 FC HV5

OptiLine Louvre Wide

35.306 · Pitch dependent louvre optics



pkg. wt. part no.
96 24.7 g 35.306.1002-0

1-Click Louvre optics

1R linear single lens optics

35.306 (1ft) optics are designed for use with
35.306.2001 (louvre 1 ft)
35.306.2002 (louvre 1 ft)

35.312.2001 (louvre 2ft).
35.312.2002 (louvre 2 ft)

Optics and louvre are only available separately.

1-Click push-in fixing into metal sheet or aluminium profile

For metal sheets: 0.5 - 1.0 mm

Material: PC

Light distribution: Medium

- **Homogeneous color mixing (also with tunable white applications)**

Technical details

- Push-in fixing into metal sheet or aluminium profile
- Centering pins for optimal alignment of optics and LED module
- Snap-in hooks for fixing LED module and optics in one step
- Integrated cable holders for wire management
- 2 cables per cable holder possible
- Centering pins for alignment and snap-in hooks for fixing the louvre
(See page 3 and 4 for more information on the louvre)

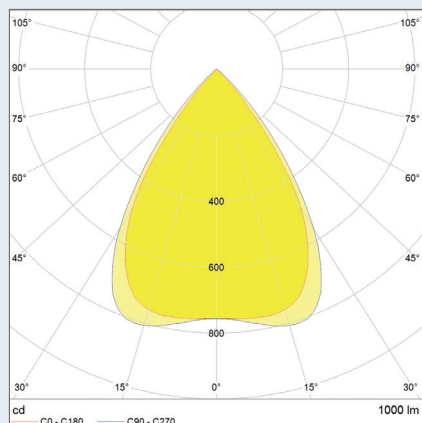
Area of application:

Applications that require optimal light and minimal glare

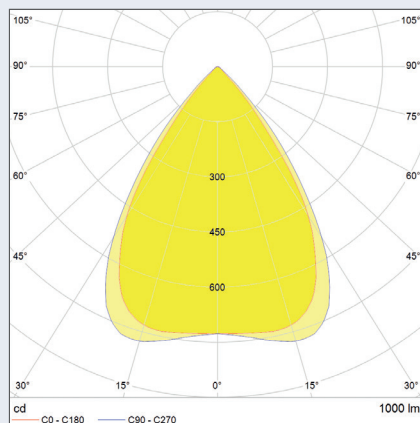
Height	13 mm
Width	40 mm
Length	260 mm
Type of fixing	Push-in fixing into metal sheet or aluminium profile
LED module	Philips Fortimo LED-R
Pitch distance	46.67 mm
Material	PC
Colour	clear
Surface outside	Single lens optics
Lichtverteilung	Wide
Optical efficiency (louvre black)	82 %
Optical efficiency (louvre white)	91 %
UGR @ 1000 lm, 1 foot (crosswise)	≤ 19 (louvre black)
UGR @ 1000 lm, 1 foot (crosswise)	≤ 19 (louvre white)
Operating temperature	max. 110 °C

The presented information are for reference only. All lighting parameters are typical values.
The light distribution depends on the used Type of LED, position tolerance, chip size and used colour.

Light distribution: black louvre



Light distribution: white louvre



Louvre: black

Light distribution: Wide 70°
Efficiency: 82%

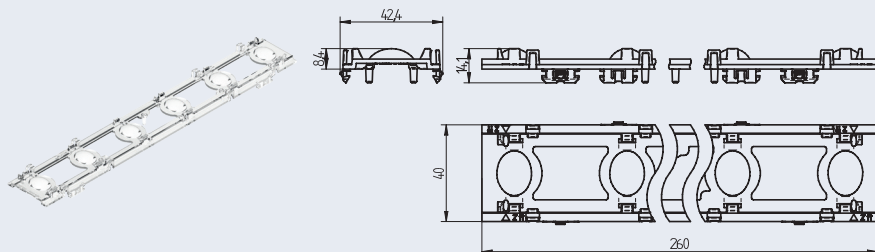
Louvre: white

Light distribution: Wide 70°
Efficiency: 91%

measured with:
Philips Fortimo LED-R FT 1ft MF 927-965 FC HV5

OptiLine Louvre Extra wide

35.306 · Pitch dependent louvre optics



pkg. wt. part no.
96 23.2 g 35.306.1003-0

1-Click Louvre optics

1R linear single lens optics

35.306 (1ft) optics are designed for use with
35.306.2001 (louvre 1 ft)
35.306.2002 (louvre 1 ft)

35.312.2001 (louvre 2ft).
35.312.2002 (louvre 2 ft)

Optics and louvre are only available separately.

1-Click push-in fixing into metal sheet or aluminium profile

For metal sheets: 0.5 - 1.0 mm

Material: PC

Light distribution: Medium

- **Homogeneous color mixing (also with tunable white applications)**

Technical details

- Push-in fixing into metal sheet or aluminium profile
- Centering pins for optimal alignment of optics and LED module
- Snap-in hooks for fixing LED module and optics in one step
- Integrated cable holders for wire management
- 2 cables per cable holder possible
- Centering pins for alignment and snap-in hooks for fixing the louvre
(See page 3 and 4 for more information on the louvre)

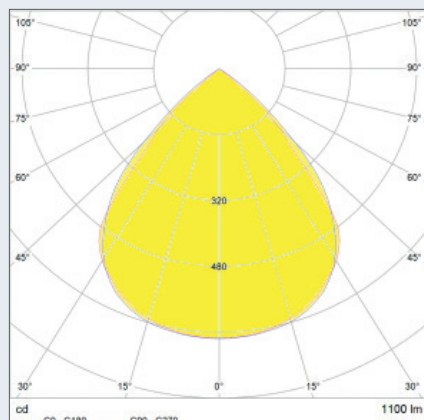
Area of application:

Applications that require optimal light and minimal glare

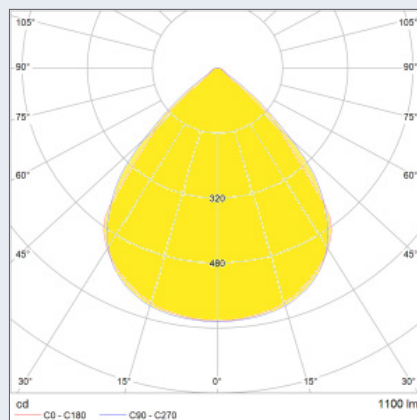
Height	13 mm
Width	40 mm
Length	260 mm
Type of fixing	Push-in fixing into metal sheet or aluminium profile
LED Type	Philips Fortimo LED-R
Pitch distance	46.67 mm
Material	PC
Colour	clear
Surface outside	Single lens optics
Lichtverteilung	Extra wide
Optical efficiency (louvre black)	95 %
Optical efficiency (louvre white)	85 %
UGR @ 1000 lm, 1 Fuß (crosswise)	≤ 21 (louvre black)
UGR @ 1000 lm, 1 Fuß (crosswise)	≤ 21 (louvre white)
Operating temperature	max. 110 °C

The presented information are for reference only. All lighting parameters are typical values.
The light distribution depends on the used Type of LED, position tolerance, chip size and used colour.

Light distribution: black louvre



Light distribution: white louvre



Louvre black

Light distribution: Extra wide
Efficiency: 95%

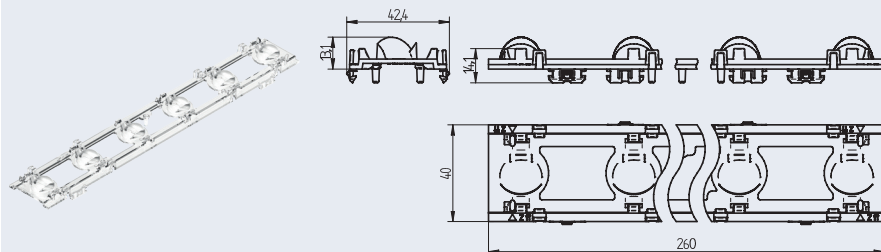
Louvre white.

Light distribution: Extra wide
Efficiency: 85%

measured with:
Philips Fortimo LED-R FT 1ft MF 927-965 FC HV5

OptiLine Louvre SA

35.306 · Pitch dependent louvre optics



pkg. wt. part no.
96 25.6 g 35.306.1004-0

1-Click Louvre optics

1R linear single lens optics

35.306 (1ft) optics are designed for use with
35.306.2001 (louvre 1 ft)
35.306.2002 (louvre 1 ft)

35.312.2001 (louvre 2ft).
35.312.2002 (louvre 2 ft)
Optics and louvre are only available separately.

1-Click push-in fixing into metal sheet or aluminium profile

For metal sheets: 0.5 - 1.0 mm

Material: PC

Light distribution: Medium

- **Homogeneous color mixing (also with tunable white applications)**

Technical details

- Push-in fixing into metal sheet or aluminium profile
- Centering pins for optimal alignment of optics and LED module
- Snap-in hooks for fixing LED module and optics in one step
- Integrated cable holders for wire management
- 2 cables per cable holder possible
- Centering pins for alignment and snap-in hooks for fixing the louvre
(See page 3 and 4 for more information on the louvre)

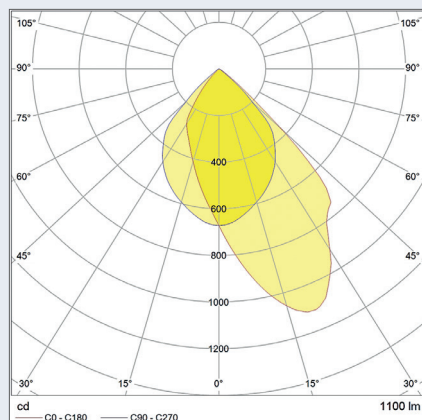
Area of application:

Applications that require optimal light and minimal glare

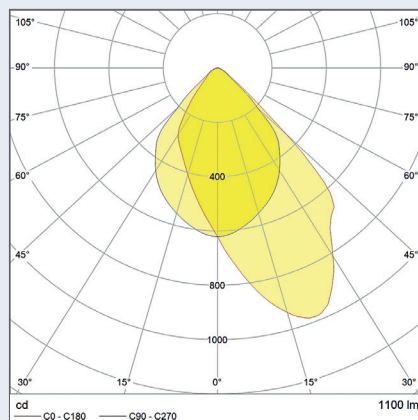
Height	13 mm
Width	40 mm
Length	260 mm
Type of fixing	Push-in fixing into metal sheet or aluminium profile
LED Type	Philips Fortimo LED-R
Pitch distance	46.67 mm
Material	PC
Colour	clear
Surface outside	Single lens optics
Lichtverteilung	Single asymmetric
Optical efficiency (louvre black)	72 %
Optical efficiency (louvre white)	84 %
Operating temperature	max. 110 °C

The presented information are for reference only. All lighting parameters are typical values.
The light distribution depends on the used Type of LED, position tolerance, chip size and used colour.

Light distribution: black louvre



Light distribution: white louvre



Louvre black

Light distribution: Single asymmetric
Efficiency: 72%

Louvre white.

Light distribution: Single asymmetric
Efficiency: 84 %

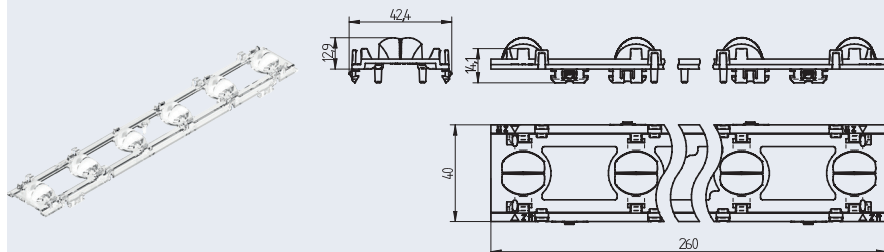
measured with:
Philips Fortimo LED-R FT 1ft MF 927-965 FC HV5

OptiLine Louvre DA

35.306 · Pitch dependent louvre optics



technology for light



pkg. wt. part no.
96 30.3 g 35.306.1005-0

1-Click Louvre optics

1R linear single lens optics

35.306 (1ft) optics are designed for use with
35.306.2001 (louvre 1 ft)
35.306.2002 (louvre 1 ft)

35.312.2001 (louvre 2ft).
35.312.2002 (louvre 2 ft)
Optics and louvre are only available separately.

1-Click push-in fixing into metal sheet or aluminium profile

For metal sheets: 0.5 - 1.0 mm

Material: PC

Light distribution: Medium

- **Homogeneous color mixing (also with tunable white applications)**

Technical details

- Push-in fixing into metal sheet or aluminium profile
- Centering pins for optimal alignment of optics and LED module
- Snap-in hooks for fixing LED module and optics in one step
- Integrated cable holders for wire management
- 2 cables per cable holder possible
- Centering pins for alignment and snap-in hooks for fixing the louvre
(See page 3 and 4 for more information on the louvre)

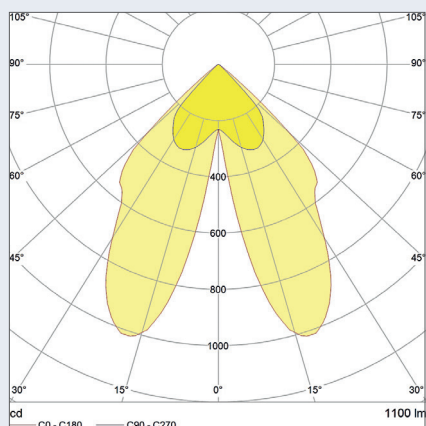
Area of application:

Applications that require optimal light and minimal glare

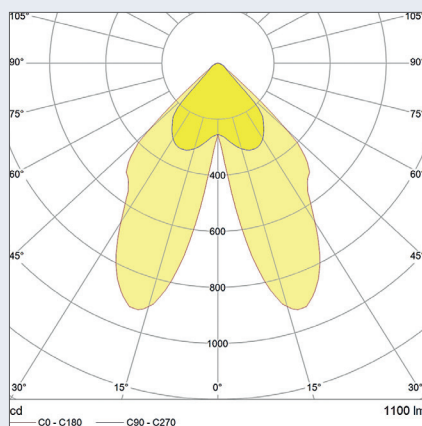
Height	13 mm
Width	40 mm
Length	260 mm
Type of fixing	Push-in fixing into metal sheet or aluminium profile
LED Type	Philips Fortimo LED-R
Pitch distance	46.67 mm
Material	PC
Colour	clear
Surface outside	Single lens optics
Lichtverteilung	Double asymmetric
Optical efficiency (louvre black)	74 %
Optical efficiency (louvre white)	85 %
Operating temperature	max. 110 °C

The presented information are for reference only. All lighting parameters are typical values.
The light distribution depends on the used Type of LED, position tolerance, chip size and used colour.

Light distribution: black louvre



Light distribution: white louvre



Louvre black

Light distribution: Double asymmetric
Efficiency: 74%

Louvre white.

Light distribution: Double asymmetric
Efficiency: 85 %

measured with:
Philips Fortimo LED-R FT 1ft MF 927-965 FC HV5

35.306 Pitch dependent louvre optics - Metal sheet cut-out and Aluminium profile



Metal sheet cut-out

