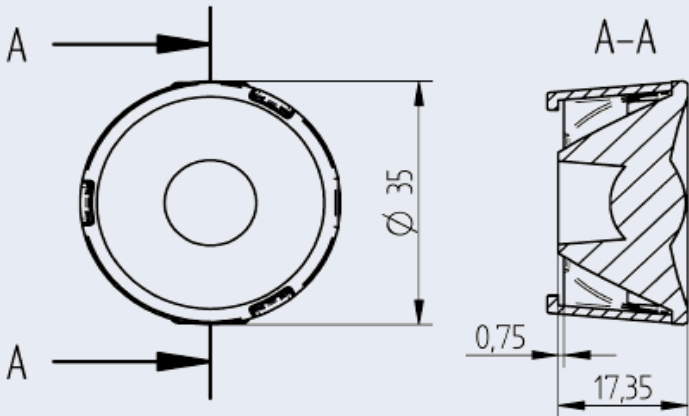


# OptiSpot Lens Ø 35 mm - Medium

35.235 - OptiSpot Lens for use with COB connectors 47.360 Ø 35 mm



Part no.

35.235.2002-0

OptiSpot Lens Ø 35 mm - Medium

Bayonet fixing by Twist & Lock action

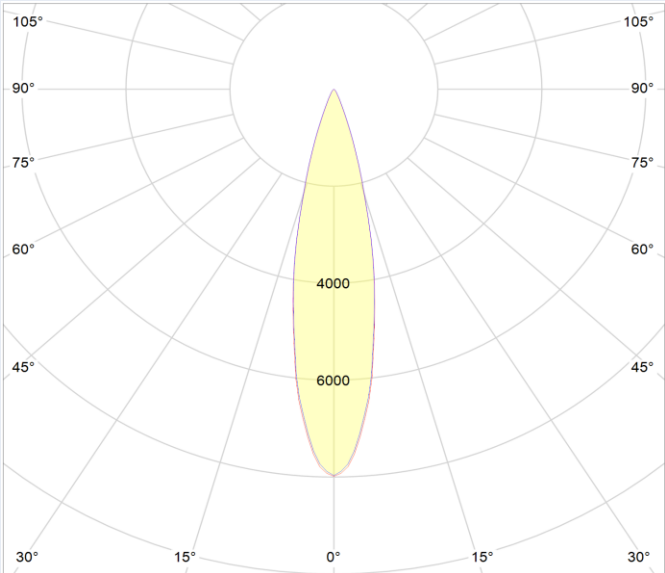
Light distribution: Medium

OptiSpot Lens is optimized for use with connectors 47.360 with Ø 35 mm.\*

Specification	
Ø on top	35 mm
Height	17,35 mm
Material holder	PC
Material lens	PMMA
Operating temperature	-40°C ... 80°C*
Weights	10,2 g
Light distribution	Medium
Beam angle* (FWHM)	22°
Efficiency**	85%
Recommended COB Type	Luminus CHM-6

\*\*Light distributions change with choice of LED type, measured with COB Luminus CHM-6 and BJB connector 47.360.1020.50.

\* 70°C, if ball pressure test according to EN 60598-1 section 13.2.1 is required for components that ensure protection against electric shock



Beam angle (FWHM) measured with Luminus CHM-6 and connector 47.360.1020-0

Beam angle (FWHM): 22° Efficiency: 85%

Beam angle depends on used COB and its LES.