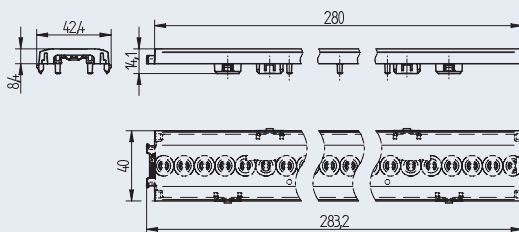
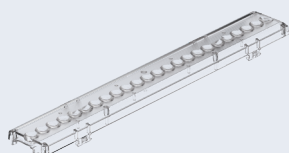


OptiLine Performance Narrow

35.324 · 1R linear single lens optics · Narrow beam



technology for light



Pitch dependent 1R linear single lens optics

Very flat single lens optics with micro structure surface
Material: PC

1-Click push-in fixing into luminaire metal sheet or aluminium profile

for metal sheets: 0.5 - 1.0 mm

- Centering pins for mounting and optimal alignment of optics and LED module
- Centering pins also for anti-twist protection
- Spacers for correct positioning and alignment of LED module to the lens
- Key and slot system for a gapless assembly of the optics
- Only one end cap for both ends

Suitable for Philips Fortimo LED Strip OC LED modules from 280 mm (1ft) to 560 mm (2ft) or comparable LED modules

Area of application:

For use in linear- and panel lights
Office: Work place lighting and corridor lighting
Shop: General lighting and corridor lighting
Industry: Park stores, department stores and warehouses
Public Areas: Corridors and stairways

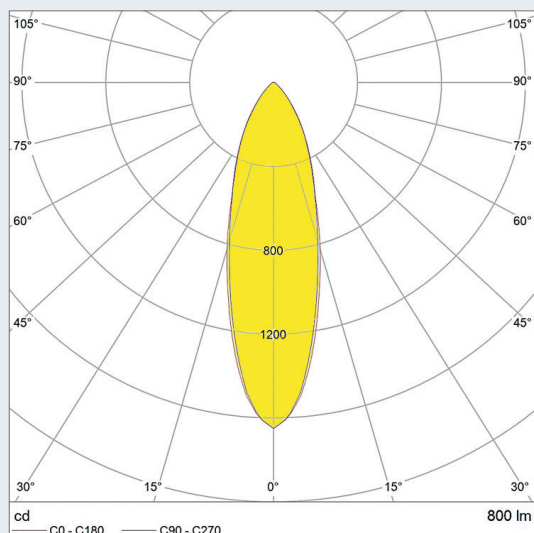
- Improved visibility and contrast of the illuminated areas
- Good and uniform light distribution
- Reduced glare

Height	8.4 mm
Width	40 mm
Length	283.2 mm
Type of fixing	Push-in fixing into luminaire metal sheet or aluminium profile
LED Module	Philips Fortimo LED Strip OC
Pitch distance	11.66 mm
Material	PC
Colour	clear satined
Surface outside	Micro structure
Light distribution	Narrow beam
Beam angle (FWHM)	31° (Philips Fortimo LED Strip OC)
Optical efficiency	95 % (Philips Fortimo LED Strip OC)
UGR @ 800 lm, 1 foot (crosswise)	≤ 19
Operating temperature	max. 110 °C

pkg.	wt.	part no.
84	37 g	35.324.1001.85

The presented information are for reference only. All lighting parameters are typical values.
The light distribution depends on the used Type of LED, position tolerance, chip size and used colour.

Light distribution with Philips Fortimo LED Strip OC

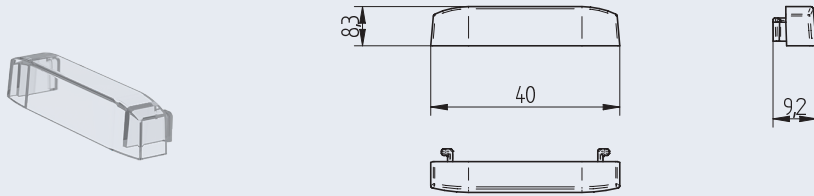


Light distribution: Narrow beam 31°
measured with Philips Fortimo LED Strip OC

Efficiency: 95%

OptiLine Performance - End cap

35.903 · End cap for 1R linear single lens optics, cut-out and aluminium profile



End cap

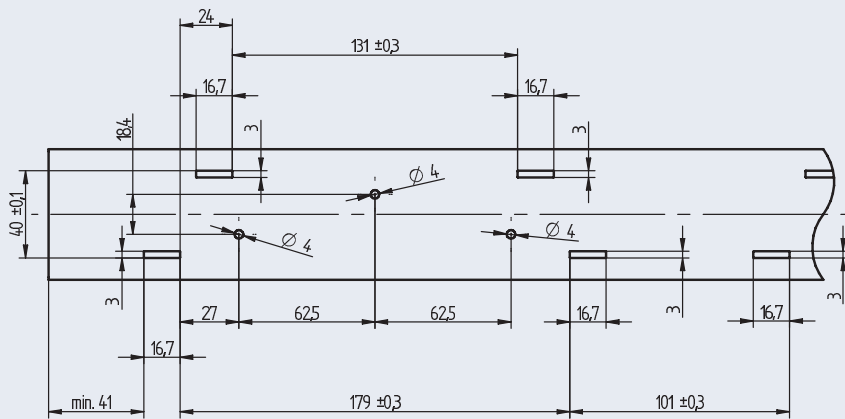
for use with single row optics
35.324.1001 - 1005.85
35.324.1006 and 1007.85
35.348.1012 and 1013.85

Slide in fixing

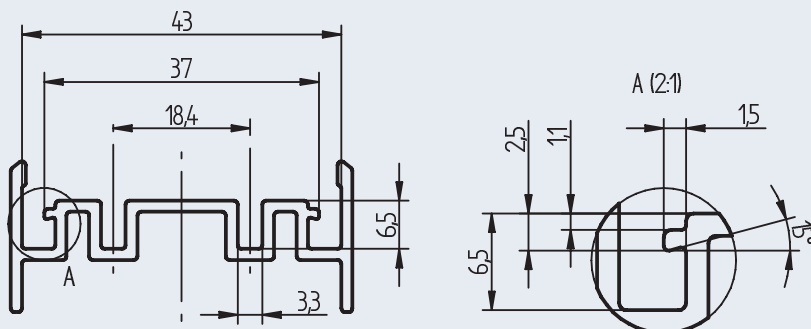
- Only 1 end cap for both sides
- Suitable for all LED module thicknesses
- Applying of customised logos possible
- Material: PC

wt.	pkg.	part no.
2 g	450	35.903.-304.85

Cut-out metal sheet

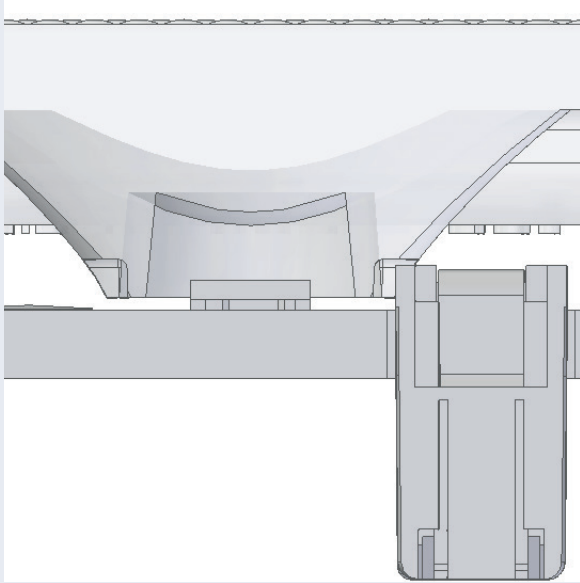


Example of aluminium profile



OptiLine Performance Narrow

35.324 · 1R linear single lens optics · Narrow beam



Execution:

optimized for use with terminal blocks for rear side wiring through clearances/cut-outs in the affected lenses