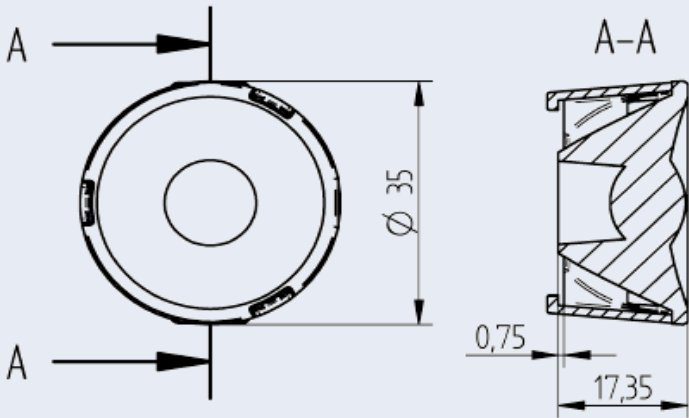


OptiSpot Lens Ø 35 mm - Wide Flood

35.235 - Optispot Lens for use with COB connectors 47.360 Ø 35 mm



Part no.
35.235.2004-0
OptiSpot Lens Ø 35 mm - Wide Flood

Bayonet fixing by Twist & Lock action

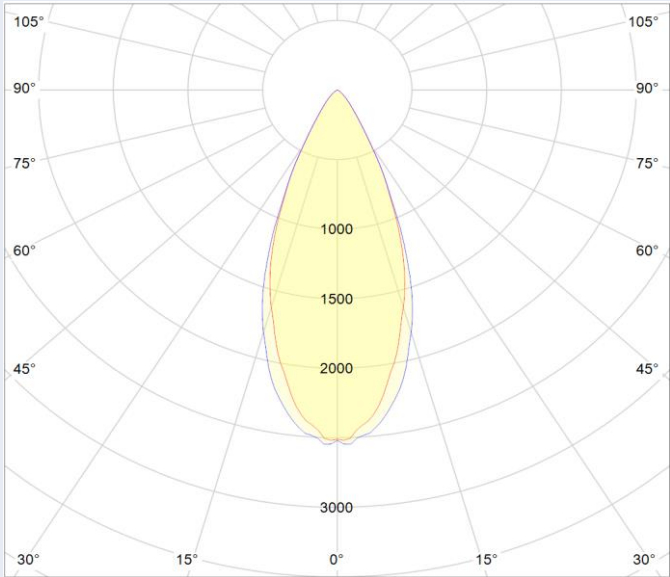
Light distribution: Wide Flood

OptiSpot Lens is optimized for use with connectors
47.360 with Ø 35 mm.*

| Specification | |
|----------------------|-----------------|
| Ø on top | 35 mm |
| Height | 17,35 mm |
| Material holder | PC |
| Material lens | PMMA |
| Operating temperatur | -40°C ... 80°C* |
| Weights | 10,5 g |
| Light distribution | Wide Flood |
| Beam angle* (FWHM) | 42° |
| Efficiency** | 80% |
| Recommended COB Type | Luminus CHM-6 |

**Light distributions change with choice of LED type,
measured with COB Luminus CHM-6 and BJB connector 47.360.1020.50.

* 70°C, if ball pressure test according to EN 60598-1 section 13.2.1 is required for components that ensure protection against electric shock



Beam angle (FWHM) measured with Luminus
CHM-6 and connector **47.360.1020-0**

Beam angle (FWHM): 42° Efficiency: 80%

Beam angle depends on used COB and its LES.