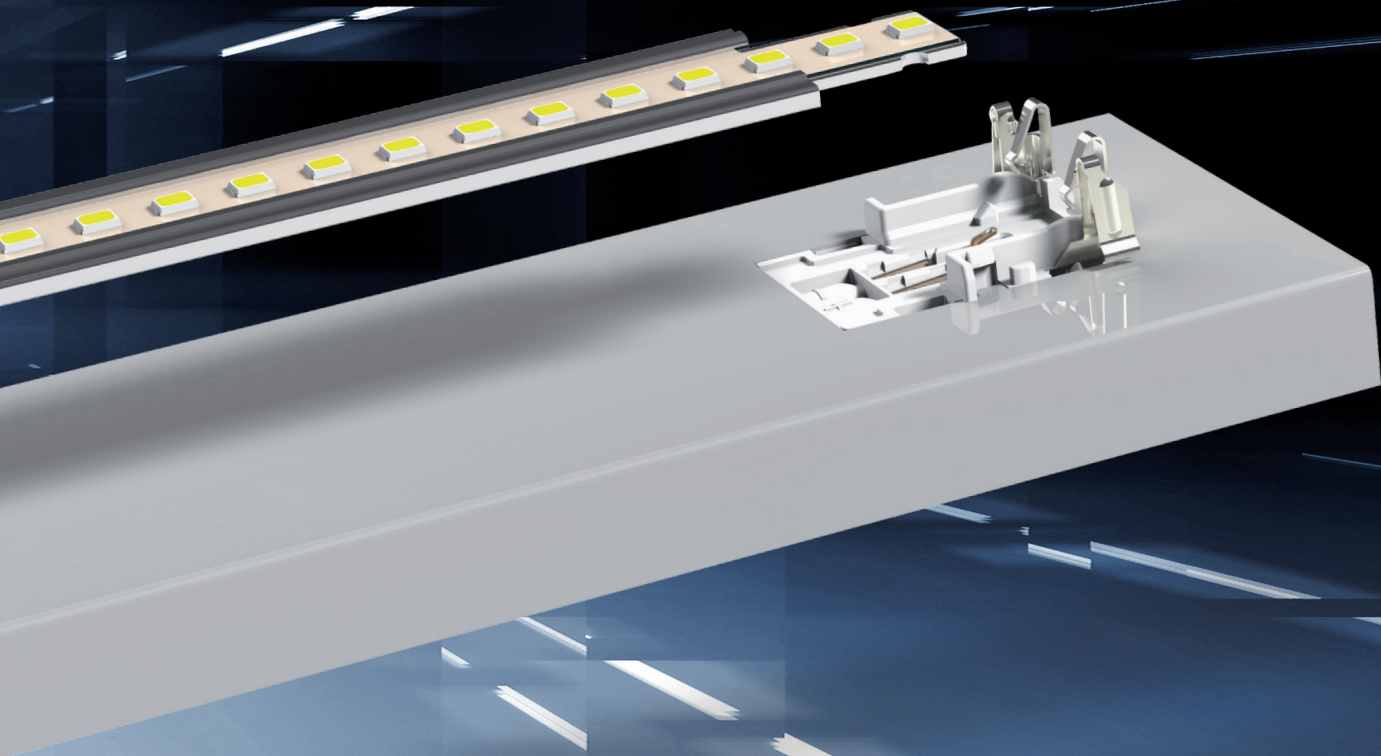
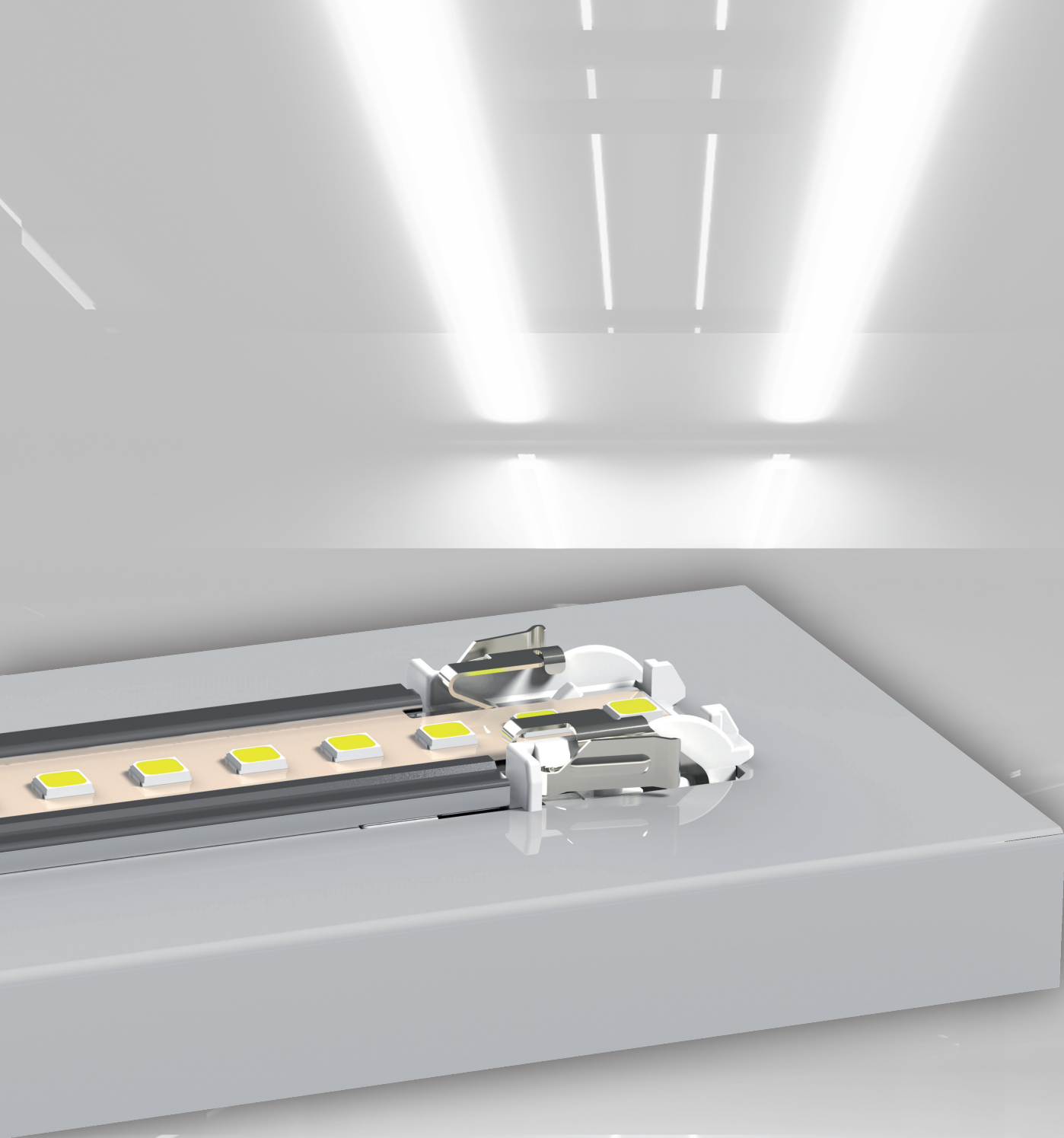


LED Board Quick-Connect System



Technology for Light



LED Board Connector

The smartest solution for easy electrical connection of linear LED boards.

The board connector is clipped into the luminaire housing. The key feature is the LED boards, which can be installed or exchanged as easily as conventional lamps. BJB supplies the appropriate PCB connector for the purpose. A metal spring securely snaps to hold the LED board in place.

To remove the LED board, simply release the springs for fast and simple board replacement

A clever and unique solution! A significant advantage for board installation and replacement.

The wiring is hidden from sight in the luminaire housing.

Suitable for the new LED board generation and in conformity with draft Zhaga Book 21.

Installation

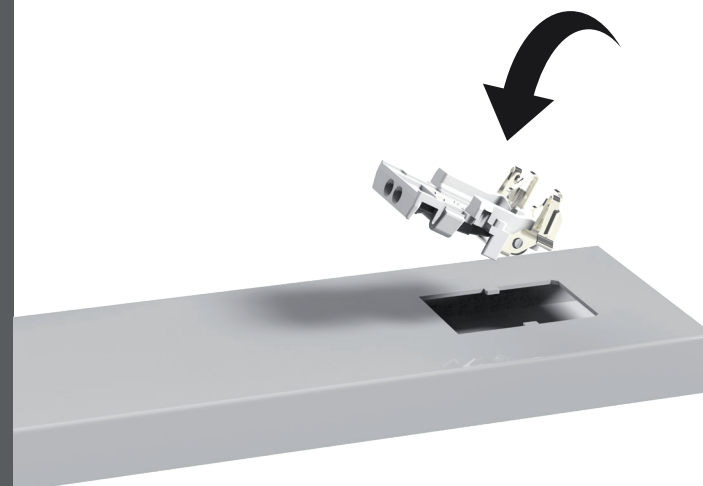
The BJB board connector 47.303 – Easy to use.

Installation is carried out by simply clipping the connector into the cut-out provided in the luminaire housing.

The wiring is routed inside the luminaire housing and linked to the connector in the usual easy way by means of push-wire contacts.

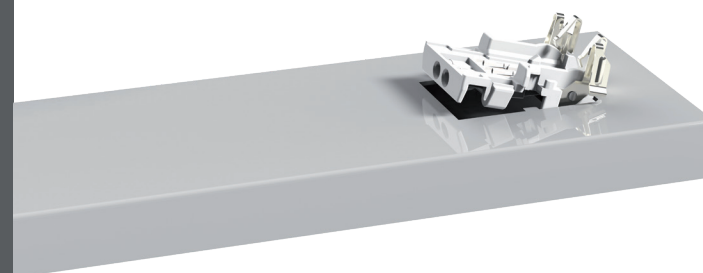
①

Swing-in

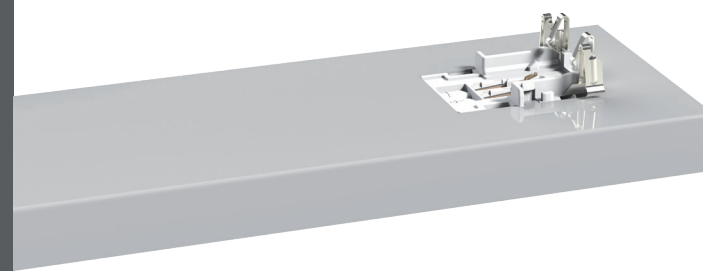


②

Push-in fixing: Insertion of LED connector into the luminaire housing

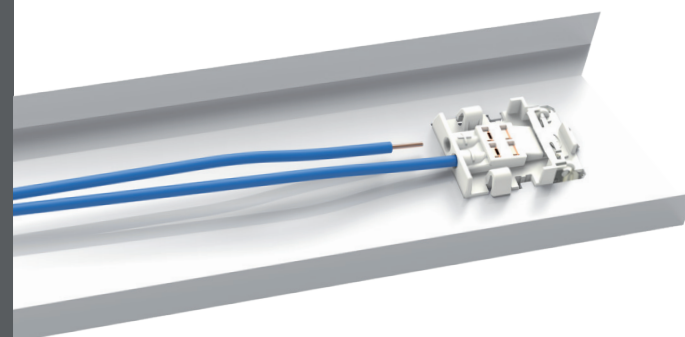


③



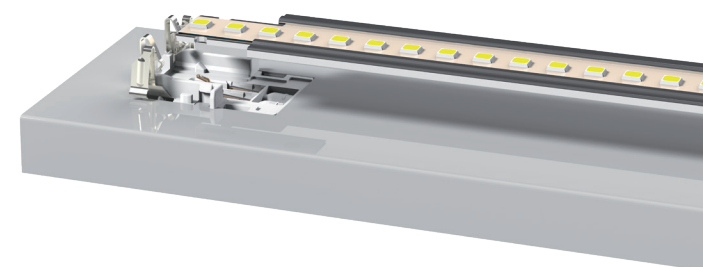
④

Wiring via Push-in contacts at back side



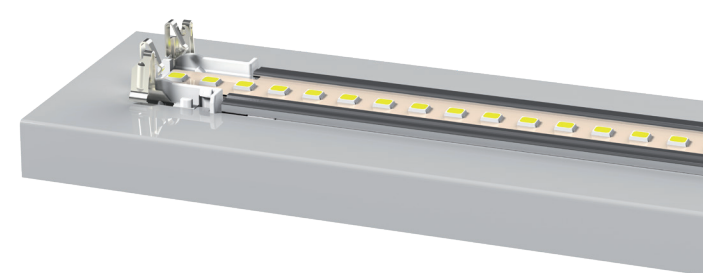
①

Inserting the LED module



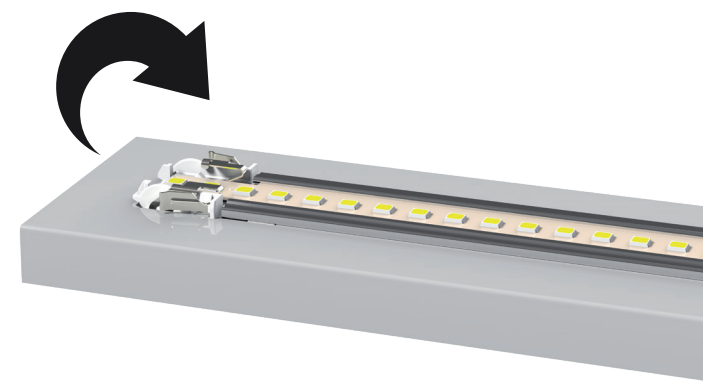
②

Electrical contact is made via the contact pads on the rear side of the LED module



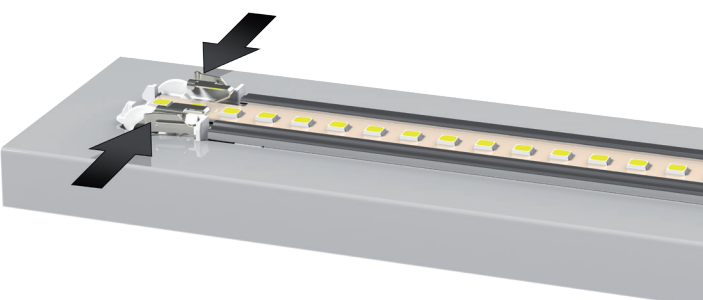
③

Secured fixing by metal bracket



④

Releasing the LED board:
By pressing the side of the retaining spring, the mechanism is opened and the LED board can be removed





Advantages of the system

- Ideal for reliable fixing and connection of LED boards
- Quick installation and replacement of circuit boards without tools
- Wiring inside the luminaire housing means no disruptive components in the light emission area
- Suitable for seamless applications due to continuous pitch
- Upgradeable due to easy replacement when new LED boards become available
- Reduction in number of versions and capital tie-up due to "late stage finishing"
- Suitable for automatic wiring via push-in wiring
- Wires can be released by twisting and pulling
- Ideal for use in circular economy initiatives

Zhaga Book 21 LED board connector 47.303.1001.50

Push-in fixing in luminaire housing
for panel thicknesses: 0.6 – 0.8 mm

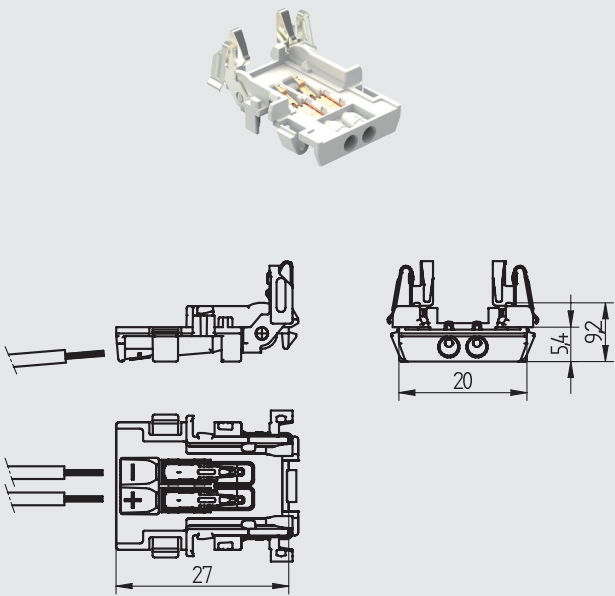
Area of application:
Suitable for LED boards in conformity with Zhaga Book 21
For use in linear luminaires in
shop, office and industrial applications

Approbation: cURus

For installation / removal of LED boards without tools
The wiring does not have to be disconnected

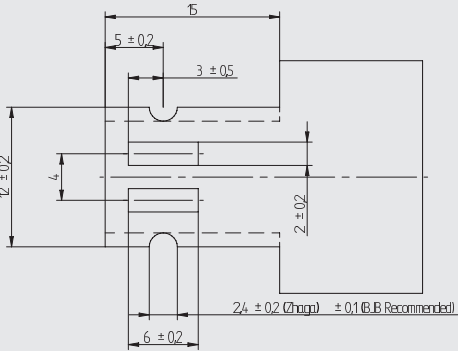
- Material:**
Housing: PC
Bracket: CrNi
- Vertical insertion of the LED board into the connector
 - Low installation force
 - PCB fixing with lever mechanism
 - Seamless connection due to narrow gap width (1.6 mm)
 - Releasable connection
 - Suitable for limited application devices

Approvals: ENEC and UL in preparation,
standardization according to ANSI planned

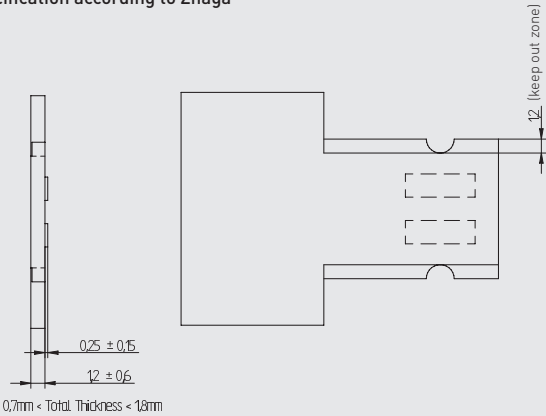


Preliminary

LED module specification according to Zhaga

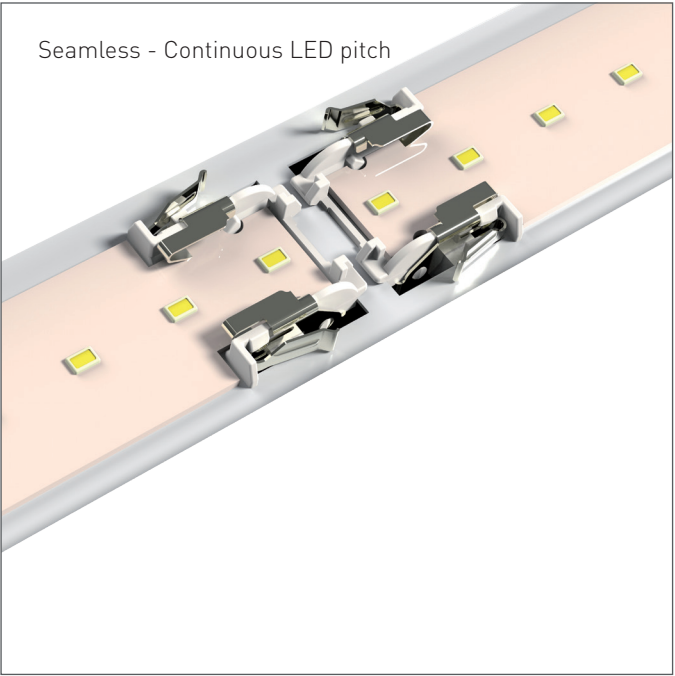


LED Board Rear with Contact Pads

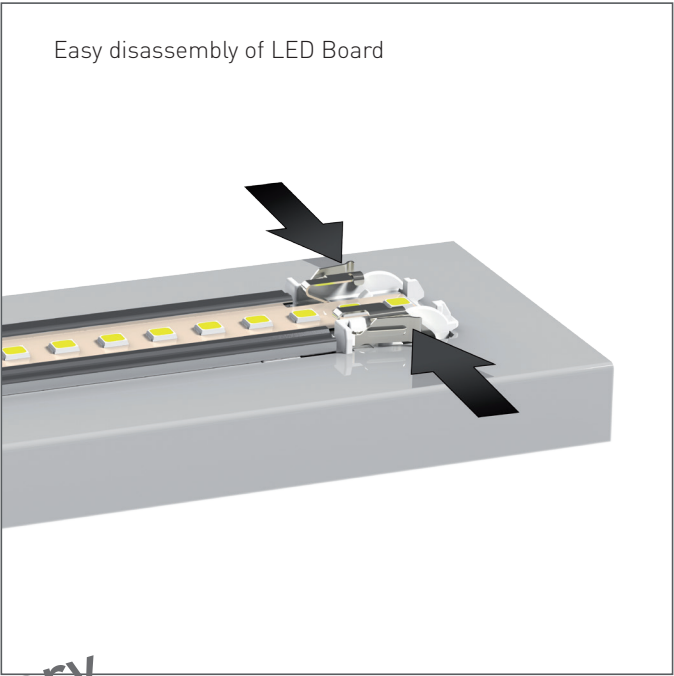


LED Board Front with Keep-Out Zones

T 110	2A	60VDC						CAD	i
					0.75 mm ²	0.75 mm ²	0.6-0.8		www.bjb.com



Seamless - Continuous LED pitch



Easy disassembly of LED Board

Preliminary

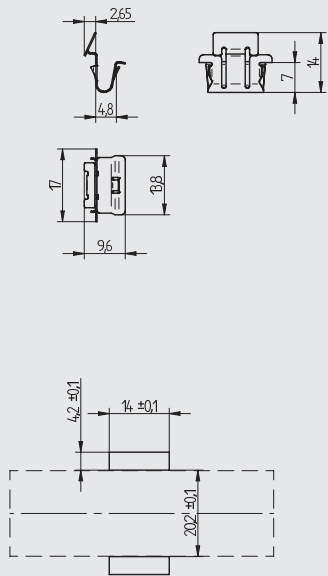


Example of application

LED - Light and connection technology

LED board holder

47.303



Cut-out

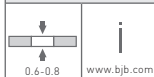
LED board holder 47.303
for LED boards according to Zhaga Book 21

Push-in fixing in luminaire housing
for panel thicknesses: 0.6 – 0.8 mm

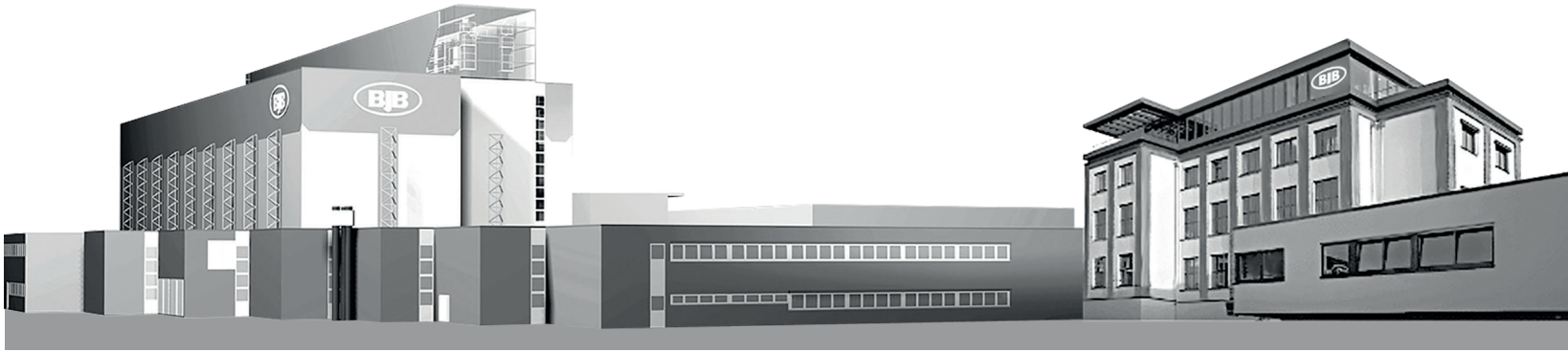
Material: CrNi

- For secure fixing of Zhaga Book 21 LED boards in combination with the LED connector 47.303
- Easy to insert and release without tools

Preliminary



About BJB



DATA & FACTS

BJB was founded in 1867 by Friedrich Wilhelm Brökelmann, Franz Jäger and Gustav Busse. The business began as a factory for petroleum lamps and developed into a company which manufactured components for establishing the connection between power supply and light. Today, BJB is a lighting technology brand which supplies innovative solutions to the lighting and domestic appliance industries worldwide.

BUSINESS SECTORS

- BJB Lighting: Lighting solutions and components for luminaires
- BJB Appliance: Lighting solutions for domestic appliances
- BJB Automation: Machines and equipment for automating luminaire and domestic appliance manufacturing processes

EMPLOYEES

560 worldwide

BJB International

Headquarters: Arnsberg (Westphalia, Germany) Subsidiaries in China, Spain, Japan, Hong Kong and the USA. Representatives in 50 other countries. Products supplied to 70 countries.

RESEARCH & DEVELOPMENT

Every year, there are numerous new developments and improvements to the 3000 different products that we sell. In an effort to achieve continuous progress, our engineers carry out detailed studies of products, markets and customer expectations. They work with the latest technical materials, devices and processes, including:

Rapid Prototyping

Laser sintering processes and 3D printers enable us to produce finished models based on design data very quickly without manual intervention.

Computer Aided Technologies

Computer-aided design enables precise results to be obtained more quickly. Models are designed, simulated and optimised on the computer. The analysis functions, which examine components at an early stage to determine their robustness, performance and other characteristics, are particularly useful:

- Computer Aided Inspection
- Computer Aided Engineering
- Computer Aided Design



Light laboratory

For the measurement of luminous flux, light spectrum, luminous intensity, colour temperature, colour rendering, chromaticity coordinate, luminous flux curves and colour shift. The integrating sphere enables particularly precise measurements to be carried out. It has almost ideal diffuse radiation. This makes it perfect for measuring the total luminous flux of various light sources and laser and light radiation. It even creates a reference source which can be used to compare detectors.

Equipment used in the design process

In order to be able to ensure 100 per cent quality at all times, we test our materials and products with machines from Zwick, the leading manufacturer of test equipment worldwide.

PRODUCTION

From the idea to the finished product, we cover the entire value-creation chain in-house. Production, as the main process, includes:

- Plastic injection moulding incl. toolmaking
- Metalworking
- Assembly
- Circuit board production with automatic placement machine, screen printing system, reflow oven and testing technology

QUALITY MANAGEMENT

International certification organisations confirm the quality of our processes and products.

Quality management: ISO 9001

LED standardisation: Zhaga

Safety & quality:

- VDE
- ENEC certificate of the VDE
- CQC (China Quality Certification)
- cULus (Underwriter Laboratories)
- JET (Japan Electrical Safety & Environment Technology Laboratories)
- X-ray computed tomography (CT) for layer, defect and wall-thickness analysis, etc.



BJB worldwide

Headquarter BJB Germany

BJB GmbH & Co. KG
Werler Straße 1 . 59755 Arnsberg
Telephone +49 (0) 29 32.9 82-0
Telefax +49 (0) 29 32.9 82-8201
info@bjb.com . www.bjb.com

BJB China
BJB Electric Dongguan Ltd.
Guancheng High-Tech Park Five Road (North),
Eastern Industrial Zone,
JiangNanDaDao, Qishi Town,
Dongguan
China PC: 523512
Telephone +86 769 22766 891
Telefax +86 769 22766 895
bjbchina@bjb.com . www.bjb.com

BJB Hong Kong
BJB Hong Kong Ltd.
Suite 2508, Tower 1, Lippo Centre
89 Queensway
Hong Kong
Telephone +86 769 22766 891
Telefax +86 769 22766 896
bjbchina@bjb.com . www.bjb.com

BJB Japan
BJB Co.,Ltd.
4F-B El Dorado Yokohama
36-5, Chigasaki-chuo
Tsuzuki-ku
Yokohama 224-00032, Japan
Telephone +81 45 479 1110
Telefax +81 45 479 1115
sales-japan@bjb.com . www.bjb.com

BJB Procesa S.A.
C-155 De Sabadell a Granollers, km 14,2
Apartado de Correos, 8
E-08185 Lliça de Vall (Barcelona)
Telephone +34 93/8445170
Telefax +34 93/8445184
procesa@bjb.com . www.bjb.com

BJB USA
BJB Electric L.P.
6375 Alabama Highway
Ringgold, GA 30736
USA
Telephone (706) 965-2526
Telefax (706) 965-2528
sales@bjb.com . www.bjb.com

BJB Sales Office Brazil
Mr. Alexandre Lozano
Av. Miro Vetorazzo, 115 C. 80
09820-135 São B. do Campo - SP - Brasil
Telefon +55 1143961582
Mobile +55 11983475204
Telefax +49 2932 982 8384
alexandre.lozano@bjb.com . www.bjb.com

BJB Sales Office Itlay
Franz Steinkeller
Viale Famagosta, 61
I-20142 Milano
Telephone +39 02 /89 15 02 76
Telefax +39 02 /89 15 90 29
bjbitalia@bjb.com . www.bjb.com

BJB Sales Office Katar
Garry Slater
Apartment 608 6th floor
Y Building 12 -Street 950
Zone 38
Al sadd - Doha
Qatar
Mobile: +974 6622 7810
Garry.Slater@bjb.com

BJB Sales Office Ningbo
Ryan Hu
Room 1516
Liansheng Building (North Part)
Cultural and commercial District Cixi
315300 Ningbo - China
Mobile: +86 139 58286600
Ryan.Hu@bjb.com



Technology for Light

Components · Optics · Automation

BJB USA

BJB Electric L.P.

6375 Alabama Highway

Ringgold, GA 30736

USA

Telephone (706) 965-2526

Telefax (706) 965-2528

sales@bjb.com . www.bjb.com

