

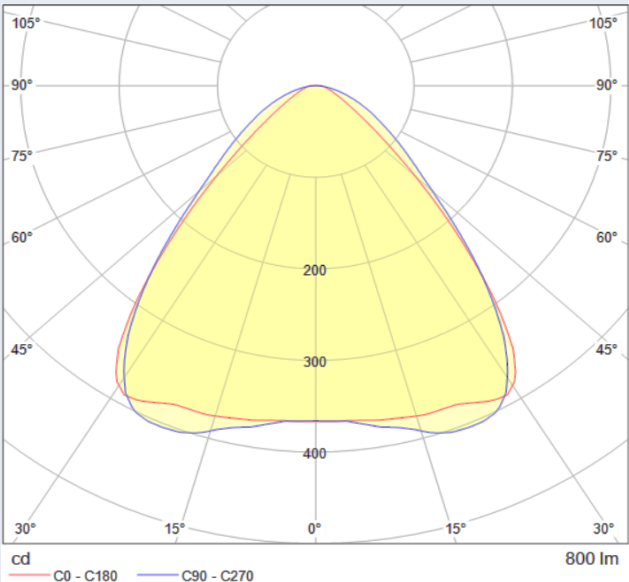
Part no.
35.320.A003-0

OptiLine Performance Duallens - Wide

- To increase efficiency, the lens design was designed for 2 LEDs (2835) per lens
- Low UGR due to single lens design
- Good light quality due to optimized microstructure on the surface
- Toolless assembly of optics & LED-board possible in one work step
- Flexibility due to clip fastening suitable for luminaire sheets (0.5 - 1.0 mm) and aluminium profiles
- Suitable for SELV and non SELV applications
- Only one end cap for both sides

Specification	
Height	8,4 mm
Width	40 mm
Length	280 mm
Type of fixing	Snap in fixation
For LED dimension	2835, 3030
Pitch distance	14 mm
Number of LEDs per pitch	2
Material	PC
Colour	clear
Permissible application temperature	max. 110°
IP protection class	IP40
Weight	46.4 g
Packaging	84

This product contains the following REACH SVHC substances. For further information please refer to www.bjb.com .		
CAS-Number	EG-Number	Substance name
3147-75-9	221-573-5	2-(2H-benzotriazol-2-yl)-4-(1,1,3,3-tetramethylbutyl)phenol

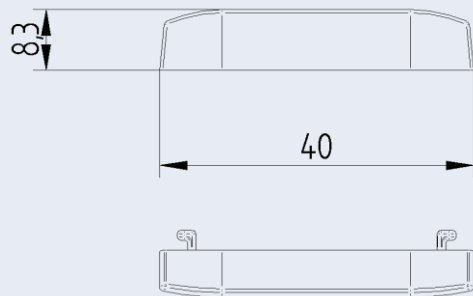


Photometric data	
Measured with LED Type	Samsung LM281B+Pro (2 pieces at a distance of 0,8 mm per lens)
Beam angle (FWHM)*	Wide
Efficiency*	94%
UGR @ 800 lm, 1 ft (crosswise)	≤ 20

*Light distribution, beam angle and efficiency are dependent on the LED in use.

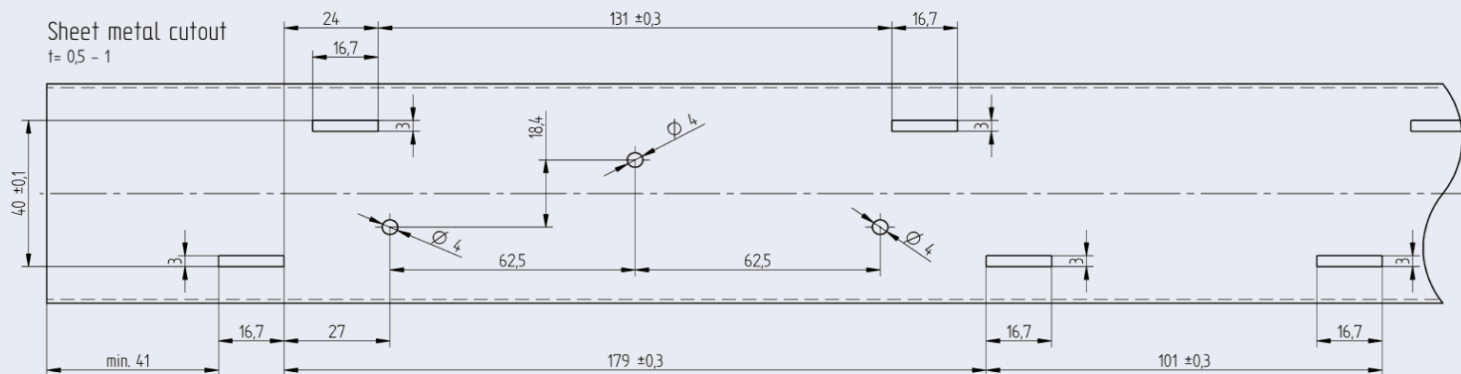
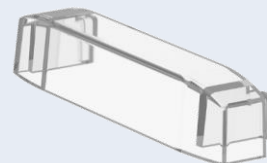
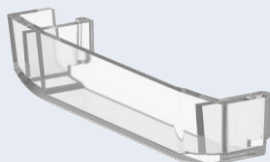
OptiLine Performance Duallens

35.320 OptiLine Performance Duallens - Wide



End cap 35.903.E304-0

- Only one end cap for both sides
- Easy to clip into the optic
- Allows a neat finish of the luminaire when realized with sheet metal



Example of aluminium profile

