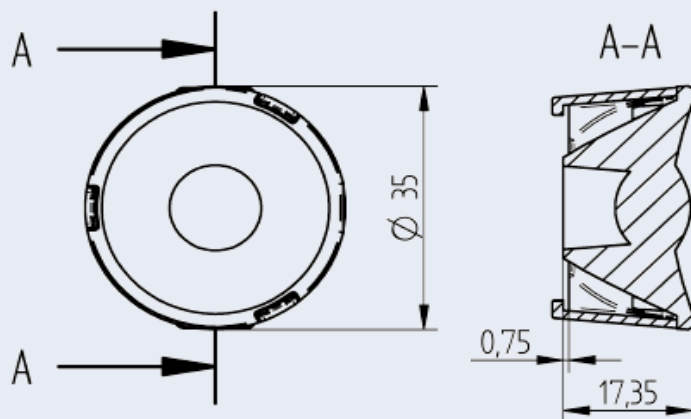


## OptiSpot Lens Ø 35 mm - Wide Flood

35.235 - Optispot Lens for use with COB connectors 47.360 Ø 35 mm



Part no.

35.235.2004-0

**OptiSpot Lens Ø 35 mm - Wide Flood**

**Bayonet fixing by Twist & Lock action**

**Light distribution: Wide Flood**

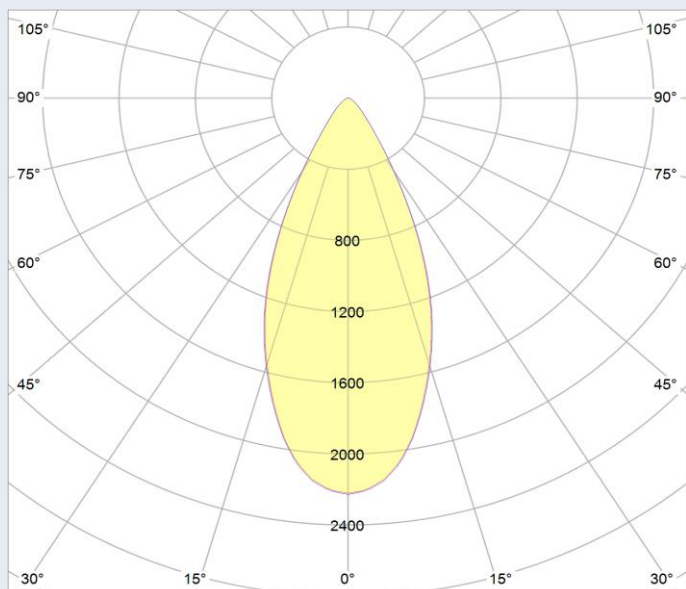
OptiSpot Lens is optimized for use with connectors  
47.360 with Ø 35 mm.\*

### Specification

Top diameter	35 mm
Height	17,35 mm
Material holder	PC
Material lens	PMMA
Max. temperature	80°C
Weights	10,5 g
Pkg.	576 pcs

This product contains the following REACH SVHC substances.  
For further information please refer to [www.bjb.com](http://www.bjb.com).

CAS-Number	EG-Number	Substance name
3147-75-9	221-573-5	2-(2H-benzotriazol-2-yl)-4-(1,1,3,3-tetramethylbutyl)phenol



### Photometric data

Beam angle (FWHM)*	44°
Efficiency*	81%
Measured with COB Type	Luminus CHM-6
Measured with COB-holder	47.360.1020-0

\*Light distribution, beam angle and efficiency are dependent on the COB in use and its LES.