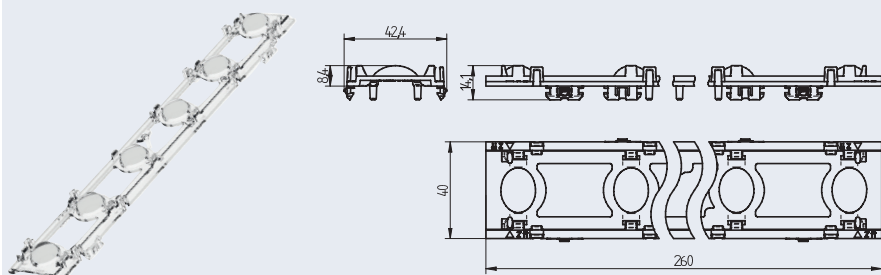


OptiLine Louvre Extra wide

35.306 Pitch dependent louvre optics



pkg. wt. part
23.2 g 96 no.35.306.1003.85

1-Click Louvre optics
1R linear single lens optics

The 35.306 (1ft) optics are designed for use with 35.312 (2ft) louvre.
Optics and louvre are only available separately
Louvre 35.306 (1ft) in preparation

1-Click push-in fixing into metal sheet or aluminium profile

For metal sheets: 0.5 - 1.0 mm

Material: PC

Light distribution: Medium

• **Homogeneous color mixing (also with tunable white applications)**

Technical details

- Push-in fixing into metal sheet or aluminium profile
- Centering pins for optimal alignment of optics and LED module
- Snap-in hooks for fixing LED module and optics in one step
- Integrated cable holders for wire management
- 2 cables per cable holder possible
- Centering pins for alignment and snap-in hooks for fixing the louvre
[See page 3 for more information on the louvre]

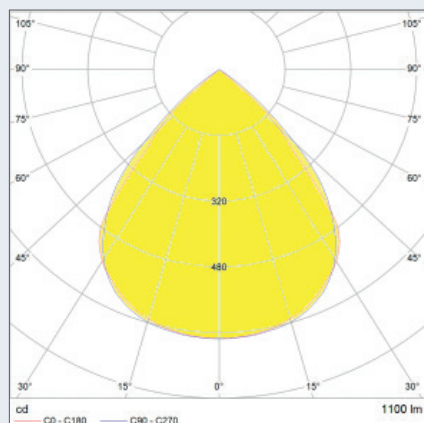
Area of application:

Applications that require optimal light and minimal glare

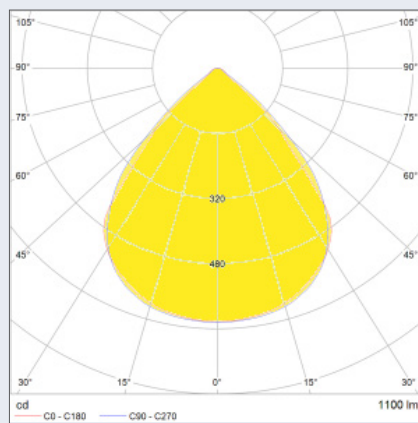
| | |
|-----------------------------------|--|
| Height | 13 mm |
| Width | 40 mm |
| Length | 260 mm |
| Type of fixing | Push-in fixing into metal sheet or aluminium profile |
| LED Type | Philips Fortimo LED-R |
| Pitch distance | 46.67 mm |
| Material | PC |
| Colour | clear |
| Surface outside | Single lens optics |
| Lichtverteilung | Extra wide |
| Optical efficiency (louvre black) | 95 % (Philips Fortimo LED-R) |
| Optical efficiency (louvre white) | 85 % (Philips Fortimo LED-R) |
| UGR @ 1000 lm, 1 Fuß (crosswise) | ≤ 21 (louvre black) |
| UGR @ 1000 lm, 1 Fuß (crosswise) | ≤ 21 (louvre white) |
| Operating temperature | max. 110 °C |

The presented information are for reference only. All lighting parameters are typical values.
The light distribution depends on the used Type of LED, position tolerance, chip size and used colour.

Light distribution: black louvre



Light distribution: white louvre



Louvre black

Light distribution: Extra wide
Efficiency: 95%

Louvre white.

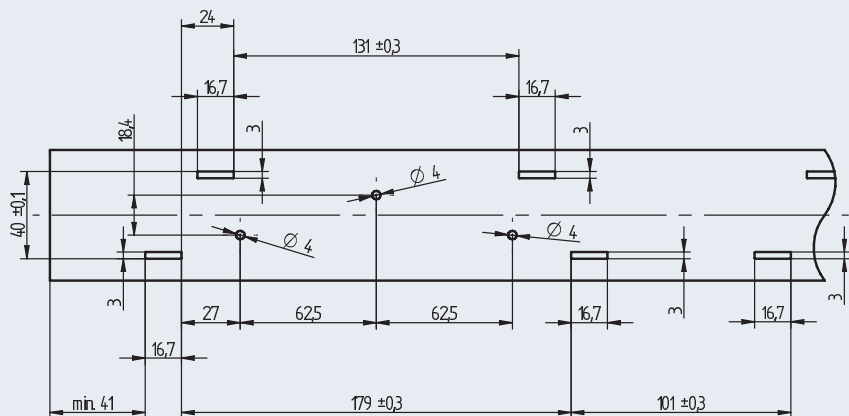
Light distribution: Extra wide
Efficiency: 85%

measured with Philips Fortimo LED-R

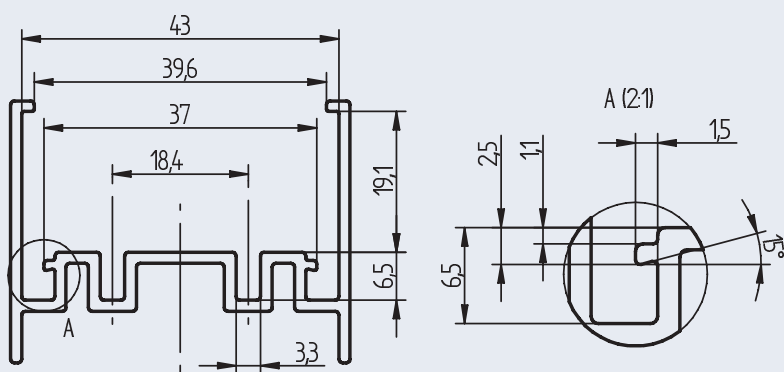
OptiLine Louvre Medium

35.306 Pitch dependent louvre optics - Metal sheet cut-out and Aluminium profile

Metal sheet cut-out

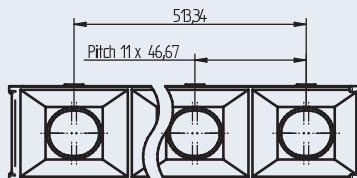
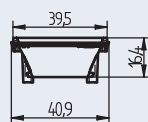
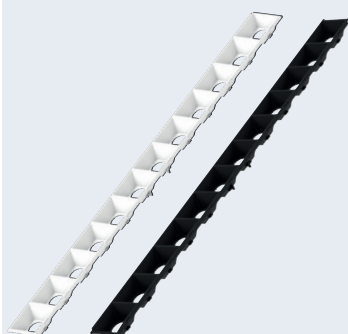


Aluminium profile



OptiLine Louvre Black / White

35.312 Louvre



| pkg. | wt. | part no. |
|--------|-----|-----------------------------|
| 64.2 g | 144 | 35.312.2001.80 black |
| 64.2 g | 144 | 35.312.2001.50 white |

Louvre

For use with 1R louvre optics

Optics and louvre are only available separately
Louvre 35.306 (1ft) in preparation

Snap-on fixing

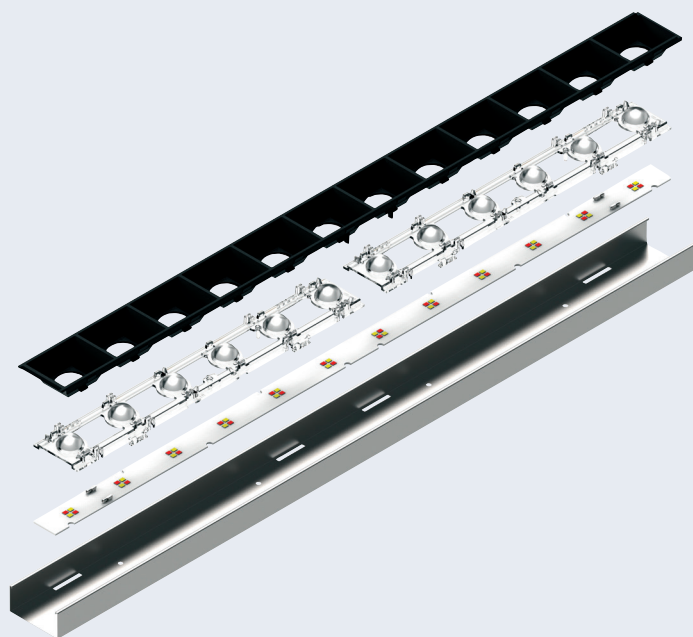
Material: PC

Technical details

- Centering and positioning pins for aligning the louvre
- Snap-in hooks for fixing louvre onto the optics
- Overlap at the louvre end
 - compensates thermal expansion
 - avoidance of stray light
- Seamless integration into the luminaire housing

| | |
|-----------------------|----------------------------|
| Height | 16.4 mm |
| Width | 40.9 mm |
| Length | 563.8 mm |
| Type of fixing | Clip on fixing onto optics |
| LED module | (Philips Fortimo LED-R) |
| Pitch distance | 46.67 mm |
| Material | PC |
| Colour | black or white |
| Operating temperature | max. 110 °C |

Exploded view with metal sheet



Exploded view with aluminium profile

