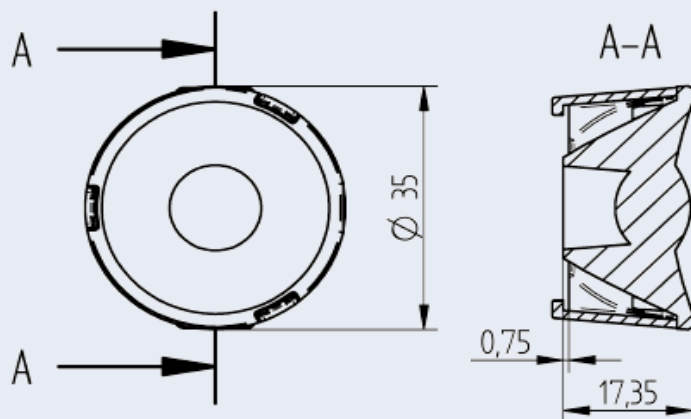


# OptiSpot Lens Ø 35 mm - Flood

35.235 - Optispot Lens for use with COB connectors 47.360 Ø 35 mm



Part no.

**35.235.2003-0**

**OptiSpot Lens Ø 35 mm - Flood**

**Bayonet fixing by Twist & Lock action**

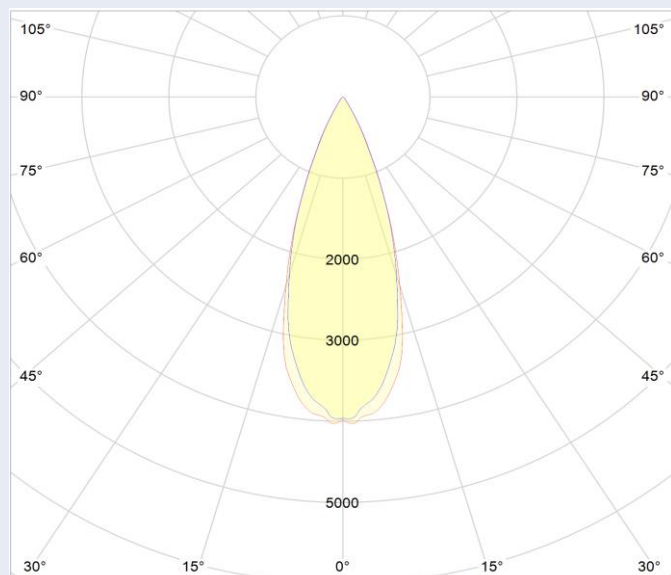
**Light distribution: Flood**

OptiSpot Lens is optimized for use with connectors  
**47.360** with Ø 35 mm.\*

Specification	
Ø on top	35 mm
Height	17,35 mm
Material holder	PC
Material lens	PMMA
Operating temperature	- 40°C ... 80°C*
Weights	9,9 g
Light distribution	Flood
Beam angle* (FWHM)	35°
Efficiency**	86%
Recommended COB Type	Luminus CHM-6

\*\*Light distributions change with choice of LED type,  
measured with COB Luminus CHM-6 and BJB connector 47.360.1020.50.

\* 70°C, if ball pressure test according to EN 60598-1 section 13.2.1 is required for components that ensure protection against electric shock



Beam angle (FWHM) measured with Luminus  
CHM-6 and connector **47.360.1020-0**

Beam angle (FWHM): 35° Efficiency: 86%

Beam angle depends on used COB and its LES.