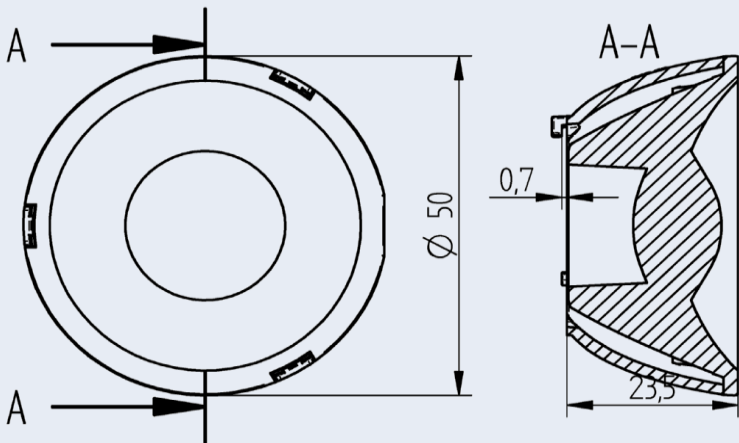


OptiSpot Lens Ø 50 mm - Wide Flood

35.250 - Optispot Lens for use with COB connectors 47.360 Ø 35 mm



Part no.
35.250.2004-0
OptiSpot Lens Ø 50 mm - Wide Flood

Bayonet fixing by Twist & Lock action

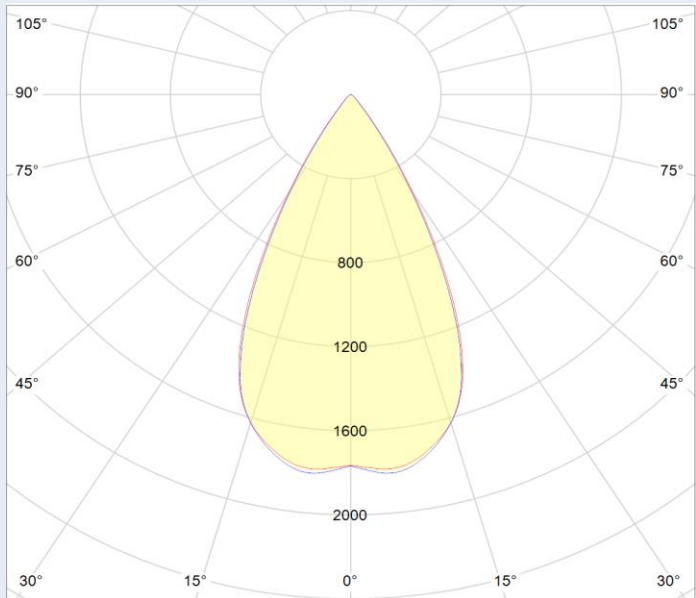
Light distribution: Wide Flood

OptiSpot Lens is optimized for use with connectors
47.360 with Ø 35 mm.*

| Specification | |
|-----------------------|------------------|
| Top diameter | 50 mm |
| Height | 23,50 mm |
| Material holder | PC |
| Material lens | PMMA |
| Operating temperature | - 40°C ... 80°C* |
| Weights | 28,3 g |
| Light distribution | Wide Flood |
| Beam angle* (FWHM) | 50° |
| Efficiency** | 84,9% |
| Recommended COB Type | Citizen CLU02J |

**Light distributions change with choice of LED type,
measured with COB Citizen CLU02J and BJB connector 47.360.1020-0

* 70°C, if ball pressure test according to EN 60598-1 section 13.2.1 is required for components that ensure protection against electric shock



Beam angle (FWHM) measured with Citizen CLU02J
and connector **47.360.1020-0**

Beam angle (FWHM): 50° Efficiency: 84,9%

Light distribution and beam angle depend on the COB
used and its LES.