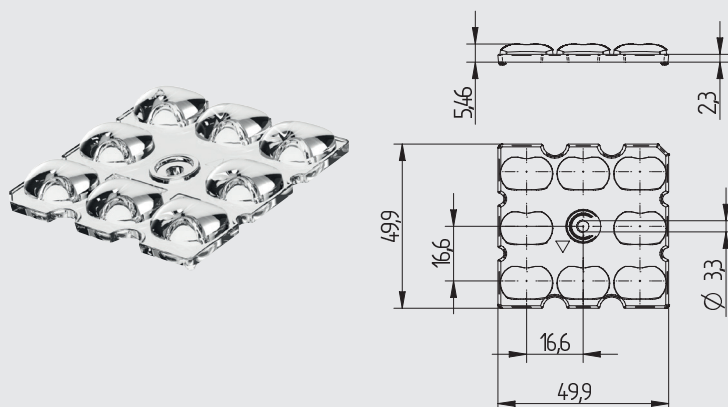


OptiLine Square

35.108

8in1 Optics for street and outdoor lighting



pkg. 500
wt. 8.3 g
part no. 35.108.1004.85

Optics for street and outdoor lighting according to Zhaga Book 15, 8in1 CSP, IESNA Typ 4

Material: PMMA (clear)
Screw fixing: Screws M3
Maximum torque: 0.5 Nm

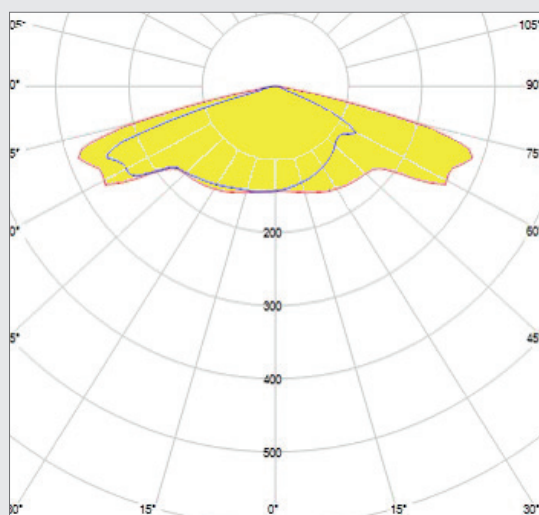
Suitable for CSP (Chip Scale Package) LED chips and LED modules according to Zhaga Book 15

Height	5.63 mm
Width	49.9 mm
Length	49.9 mm
Type of fixing	Screw fixing: [0.5 Nm] for screws M3
Type of LED	CSP
Pitch distance	16.6 mm
Material	PMMA
Colour	clear
Lens surface	highly polished
Optical efficiency	see below
Permissible application temperature	-40 °C up to + 80 °C

The presented information are for reference only. All lighting parameters are typical values.
The light distribution depends on the used Type of LEDs, position tolerance, chip size and used colour.

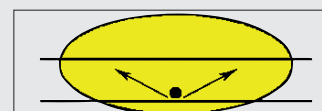
-40°C
80°C

CAD



Light distribution: IESNA Typ 4-medium
measured with Philips Fortimo FastFlex LED 4x8up PR G5

Efficiency: 97%



schematic illustration of the light distribution