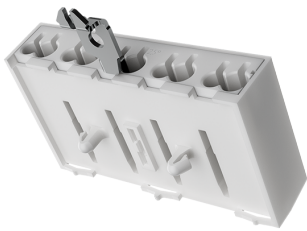
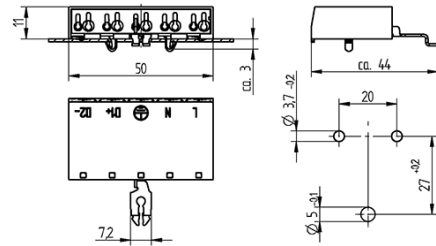
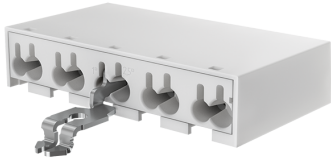




Technology for Light

# Terminal Block FlatConnect 46.435.1146.50



T 85  
-40°C



max. ø 1,8 mm



max. ø 1,8 mm



0,5 - 1,0

16 A  
450 V





Technology for Light

# Terminal Block FlatConnect

## 46.435.1146.50

---

### DESCRIPTION

Insulating length: 0.5 - 1.0 mm<sup>2</sup>: 8 + 1 mm / 1.5 - 2.5 mm<sup>2</sup>: 12 + 1 mm  
Wires external side: 2 x 0.5 - 2.5 mm<sup>2</sup>  
Wires internal side: 1 x 0.5 - 1.0 mm<sup>2</sup> / 1 x 0.5 - 2.5 mm<sup>2</sup>  
Other markings on request

Product name:	Terminal Block FlatConnect
Mounting method 1:	Push through mount
Material:	Housing: PC
Marking:	L N ? D1+ D2-
Earth contact:	Earth bracket - Snap in fixing
Material thickness:	0.5 - 1.0 mm
Contact opening:	Wire release function from front side
Quantity of poles:	5
Color:	white
Weight:	9
Pkg.:	250