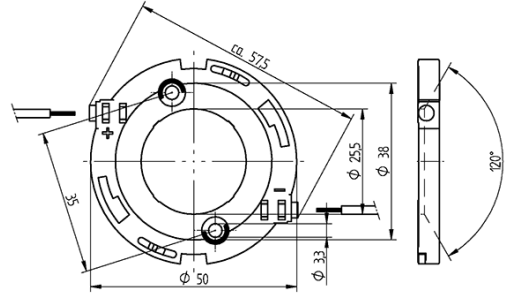
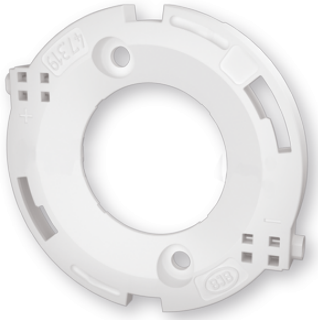




Technology for Light

COB connector Ø 50 mm for LED array 28 x 28 mm 47.319.2030.50



0,25 - 0,5 mm²



0,5 mm²



Technology for Light

COB connector Ø 50 mm for LED array 28 x 28 mm

47.319.2030.50

DESCRIPTION

With integrated reflector interface
Screw mounting: for screws M3 and locking washer
Max. torque for screw fixing 0.5 Nm*
Strip length: 7-1 mm
Polarity of LED must be observed
Specifications of LED manufacturer must be observed
cURus: For limited applications
VDE-Reg. No. E289
*Please note the max torque of the COB manufacturer

Product name:	COB connector Ø 50 mm for LED array 28 x 28 mm
Mounting method 1:	Screw mount
Mounting method 2:	P2F fixing with 28.902.-102
Prefixation of COB:	Yes
Material:	Housing: PBT Contacts: CuSn
LED manufacturer:	Prolight Opto, GLBTECH, iLED, Philips, LG Innotek, Sunpu, Samsung, Seoul Semiconductor, Luminus, Itswell, Edison, Citizen, Bridgelux, Lextar
LED Typ:	CHM-14, PB20H01, COB-Q series, SAW x2298A, SAW x229AAA, PB38V03, 37W L-COB G2, V22, ZC25/40/60, PB38H01, SAW x2296A, LC040D / 60D / 80D, CLM-22 / CXM-22, PB38U02, G7, LEMWM28-40W, SLM 28 x 28, PB30U03, PB20U02, PB40H02, PACG 110, SP22N-4090, PB40U03, GME2821, CLU04X / 73X, Opto 40W, CLU04X
Conductor cross-section:	0.5 mm ²
Approval:	cURus
cULus file no.:	E-345385
Rating:	3A / 150 VDC
Weight:	5
Pkg.:	504

Suitable for the following LED models:

LED Manufacturer	LED Type	More Information
Seoul Semiconductor	SAW x2296A	http://www.seoulsemicon.com
Itswell	COB-Q series	http://www.itswell.com
Citizen	CLU04X / 73X	http://ce.citizen.co.jp
Seoul Semiconductor	ZC25/40/60	http://www.seoulsemicon.com
Lextar	PB20H01	http://www.lextar.com
Citizen	CLU04X	http://ce.citizen.co.jp
Philips	SLM 28 x 28	http://www.lighting.philips.co.uk/oem-emea
LG Innotek	LEMWM28-40W	http://ledlighting.lginnotek.com
Sunpu	G7	http://www.sunpuled.com
Edison	Opto 40W	http://www.edison-opto.com.tw
GLBTECH	GME2821	http://www.high-cri-led.com
Luminus	CLM-22 / CXM-22	http://www.luminus.com



Technology for Light

COB connector Ø 50 mm for LED array 28 x 28 mm 47.319.2030.50

iLED	SP22N-4090	http://www.iledm.com
Prolight Opto	PACG 110	http://www.prolightopto.com
Samsung	LC040D / 60D / 80D	http://www.samsung.com
Bridgelux	V22	http://www.bridgelux.com
Lextar	PB38H01	http://www.lextar.com
Lextar	PB40H02	http://www.lextar.com
Lextar	PB40U03	http://www.lextar.com
Lextar	PB20U02	http://www.lextar.com
Lextar	PB30U03	http://www.lextar.com
Luminus	CHM-14	http://www.luminus.com
LG Innotek	37W L-COB G2	http://ledlighting.lginnotek.com
Lextar	PB38U02	http://www.lextar.com
Lextar	PB38V03	http://www.lextar.com
Seoul Semiconductor	SAW x229AAA	http://www.seoulsemicon.com
Seoul Semiconductor	SAW x2298A	http://www.seoulsemicon.com